



The Harry and Jeanette Weinberg Foundation



GRANTS FOR EDUCATION

2016 • Volume 15



OVERVIEW

The Weinberg Foundation provides approximately \$100 million in annual grants to nonprofits that provide direct services to low-income and vulnerable individuals and families, primarily in the US and Israel. Grants are focused on meeting basic needs and enhancing an individual's ability to achieve self-sufficiency with emphasis on older adults, the Jewish community, and the Weinberg Foundation's priority communities of Maryland, Northeastern Pennsylvania, Hawaii, Greater Chicago, Israel, and the Former Soviet Union.

In the following pages, the Foundation has identified selected grants of \$50,000 or more, serving education, that were approved during the past three years. During that time, the Foundation approved 59 grants totaling \$24.8 million. Of the total funds approved, \$19.5 million has been paid to date.

OVER THE PAST THREE

APPROVED

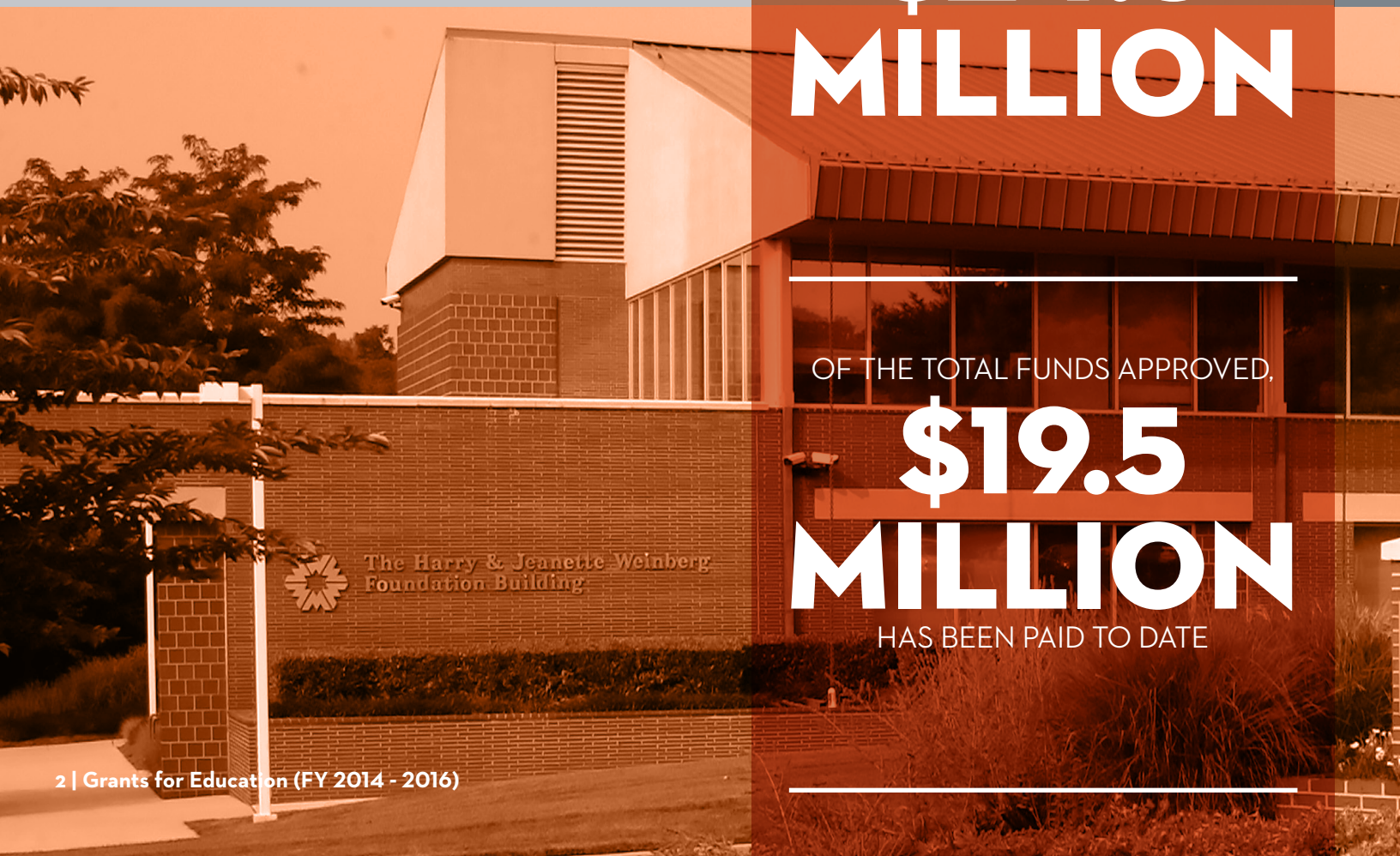
59
GRANTS
SERVING EDUCATION

TOTALING

\$24.8
MILLION

OF THE TOTAL FUNDS APPROVED,

\$19.5
MILLION
HAS BEEN PAID TO DATE



YEARS, THE WEINBERG FOUNDATION HAS

- Provided nearly 20 grants, totaling \$10.1 million, supporting early childhood education. Since 2011, the Foundation has committed a total of \$25 million to early childhood education, \$20 million of which has been dedicated to Baltimore City. More specifically, the Foundation is collaborating with the Baltimore City Public Schools to leverage funds devoted to the ten-year building plan in order to create early childhood centers within newly constructed City schools.
- Continued its support of the Baltimore Elementary and Middle School Library Project. Now involving more than 40 partners, the Library Project is strengthening literacy and improving overall academic achievement by transforming school libraries. The Foundation has committed a total of \$10 million to design, build, equip, and staff up to 24 libraries where public funds can be leveraged.
- Fostered a broader partnership in support of the Baltimore Summer Funding Collaborative, which provides high-quality summer programs that serve Baltimore City youth. Today, ten of Baltimore's largest funders provide a total investment of \$3 million in summer learning and activities, serving nearly 4,000 students.

\$130,189,648

Total of all Foundation grants distributed since 1990 supporting Education

Total of all Foundation grants supporting Education and distributed in Maryland in Fiscal Years 2014-2016

\$25,279,173

\$245,901,614

Total of all Foundation grants distributed in Fiscal Years 2014-2016



HARRY AND JEANETTE
WEINBERG FOUNDATION

LIST OF SELECTED APPROVED AND PAID GRANTS \$50,000 AND LARGER / FY 2014 - 2016

ORGANIZATION NAME	FISCAL YEAR APPROVED	AMOUNT APPROVED	AMOUNT PAID TO DATE	TYPE OF GRANT
Baltimore City Foundation <i>Baltimore, MD</i> to support the expansion of the Baltimore City Summer Head Start program that promotes school readiness by enhancing the social and cognitive development of children through educational, health, nutritional, and social services	2015	\$200,000	\$200,000	P
Baltimore Community Foundation <i>Baltimore, MD</i> to support the general operations of three Judy Centers that help connect families to early childhood education and family support programs	2015	\$180,000	\$105,000	O
Baltimore Urban Debate League <i>Baltimore, MD</i> to support the general operations of this organization that works to improve educational and life outcomes for urban youth by creating learning opportunities through competitive debate	2014	\$195,000	\$195,000	O
Big Brothers Big Sisters Of The Greater Chesapeake <i>Baltimore, MD</i> to support this organization's Beyond the Match mentoring initiative that will provide mentors for underserved youth demonstrating early signs of behavioral challenges	2015	\$200,000	\$200,000	P
Building Educated Leaders for Life <i>Baltimore, MD</i> to support the general operations of this organization that provides academic and social enrichment through after-school and summer programs for elementary and middle school students	2015	\$400,000	\$400,000	O
	2014	\$100,000	\$100,000	O
The Child And Family Network Centers <i>Alexandria, VA</i> to support the expansion of a facility where comprehensive preschool and family service programs are offered	2014	\$450,000	\$450,000	C
Children's Home & Aid Society Of Illinois <i>Carpentersville, IL</i> to support the construction of an early childhood and family center serving children ages six weeks to five years	2016	\$300,000	\$300,000	C
City Neighbors High School <i>Baltimore, MD</i> to support the Fab Lab project that will teach students materials design and fabrication, including metal and plastics, at this organization's three charter schools	2014	\$140,000	\$140,000	P
Corporate Alliance For Drug Education <i>Philadelphia, PA</i> to support a school-based program that seeks to prevent violence and substance abuse while also promoting social skills and good decision making	2014	\$200,000	\$200,000	P
Cristo Rey Jesuit High School <i>Baltimore, MD</i> to support a program that prepares high school students for college and provides them with work experience at local nonprofit organizations	2014	\$100,000	\$100,000	P
Educare of California at Silicon Valley <i>San Jose, CA</i> to support the construction of a facility that will house early childhood education programs for children, birth to age five	2015	\$500,000	\$500,000	C
Employment Opportunity & Training Center of Northeastern Pennsylvania <i>Scranton, PA</i> to support the general operations of this organization that provides integrated job-readiness and family-skills programs	2015	\$75,000	\$75,000	O

C - Capital Project O - General Operating Support P - Program Support

ORGANIZATION NAME	FISCAL YEAR APPROVED	AMOUNT APPROVED	AMOUNT PAID TO DATE	TYPE OF GRANT
Enterprise Community Partners <i>Baltimore, MD</i> to support a program that provides parents with educational and social supports	2014	\$50,000	\$50,000	P
Episcopal Community Services of Maryland <i>Baltimore, MD</i> to support the Ark preschool program that promotes school readiness for homeless children	2014	\$150,000	\$150,000	P
Fund for Educational Excellence <i>Baltimore, MD</i> to support the early childhood center at Elmer A. Henderson: A Johns Hopkins Partnership School (Henderson-Hopkins)	2016	\$90,000	\$90,000	P
to support the construction of early childhood centers at Arundel Elementary and Arlington Elementary	2015	\$1,800,000	\$1,200,000	C
to support the Baltimore City Schools Partnership initiative that will operate early childhood centers in Arundel Elementary and Arlington Elementary	2015	\$400,000	\$266,667	P
to support the Early Childhood Data Collaborative that measures the impact of early childhood programs	2015	\$200,000	\$200,000	P
to support the expansion of the Chicago Parent Program, a group parent-skills training program that teaches parents evidence-based strategies for improving their children's behavior	2015	\$120,000	\$120,000	P
to support the continued renovation of Baltimore City Public Schools libraries as part of the Baltimore Elementary and Middle School Library Project, an initiative that has committed to design, build, equip, and staff up to 24 new libraries	2014	\$5,000,000	\$3,000,000	C
to support Read to Succeed, a summer learning program that works to increase literacy skills and enrichment for approximately 3,000 students	2014	\$50,000	\$50,000	P
The Greater Carbondale YMCA <i>Carbondale, PA</i> to support the completion of a multi-year capital campaign for renovation and new construction, including a pool	2015	\$750,000	\$750,000	C
Higher Achievement Program <i>Baltimore, MD</i> to support the general operations of this organization that provides middle school students with academic support and enrichment after-school and throughout the summer	2014	\$100,000	\$100,000	O
Inner City Scholarship Fund <i>New York, NY</i> to support technology upgrades at 68 Catholic elementary schools operated by the Archdiocese of New York with the goal of implementing blended learning and incorporating online platforms into traditional instruction	2016	\$600,000	\$600,000	C
to support the renovation of Catholic elementary schools operated by the Archdiocese of New York	2014	\$300,000	\$300,000	C
to support a program that provides job-readiness skills, training, mentors, and summer employment for inner-city students in their junior year of high school	2014	\$120,000	\$120,000	P
JCC of Greater Pittsburgh <i>Pittsburgh, PA</i> to support the renovation of this organization's mixed income Early Childhood Development Center that provides enriched early education and child care programs for children, infancy to age five, with the goal of better preparing children for school success	2014	\$300,000	\$300,000	C

LIST OF SELECTED APPROVED AND PAID GRANTS \$50,000 AND LARGER / FY 2014 - 2016

ORGANIZATION NAME	FISCAL YEAR APPROVED	AMOUNT APPROVED	AMOUNT PAID TO DATE	TYPE OF GRANT
KIPP Baltimore <i>Baltimore, MD</i> to support the Extended Time program that increases elementary and middle school students' learning time by a total of 45 days each school year	2015	\$400,000	\$400,000	P
Light Health and Wellness Comprehensive Services <i>Baltimore, MD</i> to support this organization's early childhood program that provides full-day, year-round care for children between the ages of two and four, and to support the renovation of the organization's facility	2016	\$85,000	\$85,000	P C
Living Classrooms Foundation <i>Baltimore, MD</i> to support the general operations of the Weinberg Early Childhood Center at Commodore John Rodgers	2015	\$150,000	\$100,000	O
to support the Girls Empowerment Mission (GEM), a program that provides educational and recreational opportunities for disadvantaged high school girls who are working toward self-sufficiency	2015	\$75,000	\$75,000	P
to support this organization's out-of-school time program that serves disadvantaged youth with after-school and summer programming at three locations	2014	\$300,000	\$300,000	P
Maryland Family Network <i>Baltimore, MD</i> to support technology upgrades, staff training, and implementation of evaluation and compliance measures for Early Head Start programs	2015	\$300,000	\$250,000	P
to support the general operations of this organization's 23 family support centers that provide thousands of youth with the resources to learn and succeed	2014	\$200,000	\$200,000	O
The Middle Grades Partnership <i>Baltimore, MD</i> to support the general operations of this organization that provides summer and after-school programs designed to improve personal development and educational outcomes, including acceptance of middle school youth into the high schools of their choice	2015	\$150,000	\$150,000	O
Monroe County Youth Employment Service <i>Tannersville, PA</i> to support the general operations of this organization that provides career exploration and employment training for youth between the ages of 14 and 21	2014	\$70,000	\$70,000	O
My Sister's Circle <i>Timonium, MD</i> to support the general operations of this organization that provides mentoring programs for girls as they transition from middle school through college	2014	\$90,000	\$90,000	O
Neighborhood House <i>Portland, OR</i> to support the construction of an early childhood center and playground in an affordable housing community	2014	\$225,000	\$225,000	C
New Leaders <i>Baltimore, MD</i> to support the general operations of this organization that works to develop school leaders and a principal pipeline for City schools	2015	\$250,000	\$250,000	O
Pittston Memorial Library <i>Pittston, PA</i> to support the construction of an addition that will include a children's wing and a community room	2015	\$400,000	\$400,000	C

C - Capital Project O - General Operating Support P - Program Support

ORGANIZATION NAME	FISCAL YEAR APPROVED	AMOUNT APPROVED	AMOUNT PAID TO DATE	TYPE OF GRANT
Raising A Reader <i>Baltimore, MD</i> to support the general operations of this organization that works to promote family engagement through reading	2016	\$50,000	\$50,000	○
Reading Partners <i>Baltimore, MD</i> to support the general operations of this organization that provides volunteer-led literacy tutoring for elementary school children	2014	\$250,000	\$250,000	○
Salvadori Center for the Built Environment <i>New York, NY</i> to support the general operations of this organization that provides STEM (Science, Technology, Engineering, Math) programming for students and professional development for teachers	2016	\$200,000	\$100,000	○
to support the general operations of this organization's GLOBE (Guided Learning through Our Built Environment) program that enhances students' knowledge of math, science, arts, and the humanities by using hands-on architecture and structural engineering projects	2014	\$200,000	\$200,000	○
Scranton Hebrew Day School <i>Scranton, PA</i> to support the general operations of this organization that provides Judaic and secular education for children, kindergarten to grade eight	2016	\$200,000	\$100,000	○
	2016	\$56,744	\$56,744	○
Southside Early Childhood Center <i>Saint Louis, MO</i> to support the construction of a state-of-the-art early childhood center for children, birth to age five	2014	\$200,000	\$200,000	Ⓢ
St. Vincent de Paul of Baltimore <i>Baltimore, MD</i> to support the renovation and expansion of the Sarah's Hope facility, the largest shelter for homeless families in the City, that includes an on-site early childhood center	2015	\$2,000,000	\$2,000,000	Ⓢ
Teach for America * Baltimore <i>Baltimore, MD</i> to support the general operations of this organization that provides recruitment, selection, training, and ongoing support for college graduates who teach pre-kindergarten through grade 12	2015	\$1,200,000	\$1,200,000	○
Thread <i>Baltimore, MD</i> to support the general operations of this organization that provides mentoring services for underperforming high school students facing barriers outside of the classroom	2015	\$200,000	\$200,000	○
United Neighborhood Centers of Northeastern Pennsylvania <i>Scranton, PA</i> to support the renovation of the current West Side Community Center into The Cabrini Center for the Arts, an upgraded facility that will provide arts programming for at-risk youth	2015	\$175,000	\$175,000	Ⓢ
Urban Alliance Foundation <i>Baltimore, MD</i> to support the general operations of this organization that works to increase high school graduation rates and prepare youth for employment after graduation	2014	\$150,000	\$150,000	○

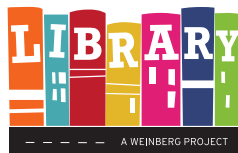
LIST OF SELECTED APPROVED AND PAID GRANTS \$50,000 AND LARGER / FY 2014 - 2016

ORGANIZATION NAME	FISCAL YEAR APPROVED	AMOUNT APPROVED	AMOUNT PAID TO DATE	TYPE OF GRANT
Vogel Alcove <i>Dallas, TX</i> to support the renovation of City Park Elementary School that will become a new operations center for comprehensive and therapeutic early childhood education for homeless children, birth to age five	2014	\$250,000	\$250,000	C
Volunteers of America - Wilkes-Barre <i>Wilkes-Barre, PA</i> to support the general operations of this organization that provides programs in the areas of homelessness, therapeutic treatment, transportation, and leadership	2015	\$200,000	\$200,000	O
Wide Angle Youth Media <i>Baltimore, MD</i> to support the renovation of this organization's main office, enabling it to serve more high school students and strengthen its apprenticeship program, an opportunity for students to apply media and other technical skills in a real world setting	2016	\$75,000	\$75,000	C
Wright Center Medical Group <i>Scranton, PA</i> to support the implementation of Together in Health, a program that seeks to improve the health, wellness, and academic performance of students by removing barriers to learning	2015	\$300,000	\$300,000	P
YMCA of Central Maryland <i>Baltimore, MD</i> to support the early childhood center at Elmer A. Henderson: A Johns Hopkins Partnership School (Henderson-Hopkins)	2015	\$2,660,000	\$684,000	P
to support this organization's Baltimore City Youth Development program that addresses the academic, physical, and developmental needs of children	2014	\$700,000	\$700,000	P

C - Capital Project O - General Operating Support P - Program Support



FEATURED INITIATIVES



Now involving more than 40 partners, The Baltimore Elementary and Middle School Library Project (Library Project) is strengthening literacy and improving overall academic achievement by transforming school libraries. The Weinberg Foundation has committed a total of \$10 million to design, build, equip, and staff up to 24 libraries where public funds can be leveraged.

By the end of 2016, with the key support of the State of Maryland and Baltimore City Public Schools, 13 library renovations will have been completed, with more than 6,000 students served. These projects include construction, the latest learning technologies, and thousands of new books, as well as operational funding for support staff and professional development.

Initial results of an ongoing evaluation show that students at Library Project schools maintained or increased literacy skill proficiency rates based on end-of-year benchmark data. Students at the first nine schools surveyed have also increased the number of books they checked out from 9,000 to 45,000 since the beginning of the project—a 400 percent increase!



The Foundation wants to make sure children enter kindergarten healthy and ready to learn. Just in the past three years, the Foundation has provided nearly 20 grants, serving early childhood education, totaling \$10.1 million. Since 2011, the Foundation has committed a total of \$25 million to early childhood education, \$20 million of which has been dedicated to Baltimore City.

Partnership with Baltimore City Schools to Construct Early Childhood Centers: The Foundation is collaborating with Baltimore City Public Schools and the Maryland Stadium Authority to leverage government and private funds to create family and child-friendly spaces within new City schools. These spaces will accommodate early childhood programming, including Early Head Start, nonprofit infant and toddlers programs, Head Start, pre-k, Judy Centers, family support centers, and other programs designed to meet the needs of low-income families and children from birth to age five.

Early Childhood Data Collaborative: Investments in early childhood education should have lasting impacts on low-income children. Therefore, the Foundation is working with the Baltimore Education Research Consortium and other partners to implement an evaluation plan and data sharing infrastructure. This long-term evaluation will enable the Foundation, the City and early childhood programs to measure program impact, including student literacy, math, school readiness and attendance, and parent engagement.



GIVING HIGHLIGHT

In addition to responding to hundreds of nonprofit grant requests each year, the Weinberg Foundation engages in proactive grantmaking. These grant programs address some of the most critical challenges facing our communities by supporting best practices and promoting change through collaboration and collective impact.



Research reveals that youth in low-income families, unlike their peers from higher-income families, often lack access to activities—whether through camps, libraries, or even museums—that keep their minds engaged over the summer. As a result, they experience “summer slide,” losing one to three months of knowledge and skills gained during the previous school year.

As part of its commitment to proactive grantmaking, the Foundation has committed a total of \$2.7 million over three years to fund high-quality summer programs that serve low-income Baltimore City youth.

The Foundation created the Summer Youth Initiative in 2014, providing all \$1 million of the program’s inaugural funding. In 2015, two other Baltimore funders teamed with Weinberg to provide a total of \$1.5 million. And in 2016, the number of funders grew from three to ten, with a total summer learning investment of \$3 million. Now known as the Baltimore Summer Funding Collaborative, the 2016 program included the following funders:

- The Abell Foundation
- The Annie E. Casey Foundation*
- The Associated: Jewish Community Federation of Baltimore
- Clayton Baker Trust
- Family League of Baltimore*
- France-Merrick Foundation
- The Harry and Jeanette Weinberg Foundation*
- Joseph and Harvey Meyerhoff Family Charitable Funds
- Lockhart Vaughan Foundation
- The Morton K. and Jane Blaustein Foundation

*Also a 2015 funder



In 2016, the Weinberg Foundation invested \$770,000 in 29 nonprofits as part of the Summer Funding Collaborative.

Programs funded served more than 3,700 students, pre-kindergarten through grade 12, and focused on literacy; science, technology, engineering, and math (STEM); youth employment; college and career readiness; environmental education; health and overcoming stress and trauma; and enrichment such as sports and the arts.

- Access Art
- Afya Baltimore
- Art with a Heart
- Baltimore Corps
- Baltimore Curriculum Project
- Baltimore Montessori Public Charter School
- Baltimore SquashWise
- Beat the Streets-Baltimore
- Bon Secours of Maryland Foundation
- Digital Harbor Foundation
- Education Based Latino Outreach (EBLO)
- Friends of the Poor
- Green Street Academy
- Head Start Summer Collaborative
- Liberty Elementary Rec and Tech Center
- Living Classrooms Foundation
- Parks and People Foundation
- Patterson Park Public Charter School
- Paul's Place
- Saint Ignatius Loyola Academy
- Soccer Without Borders
- Southwest Baltimore Charter School
- St. Veronica Roman Catholic Congregation
- St. Vincent de Paul of Baltimore
- The Baltimore Youth Alliance
- The Hampden Family Center
- Village Learning Place
- The YMCA of Central Maryland
- Young Audiences of Maryland

Several of the programs, which the Foundation supported in previous years as part of the Summer Funding Collaborative, are now supported through the Foundation's regular grantmaking process.

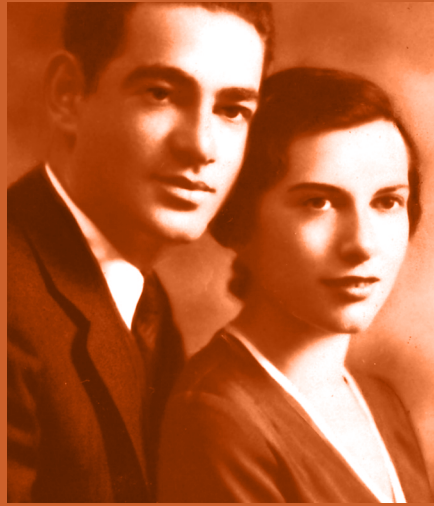
STUDENT SPOTLIGHT

Digital Harbor Foundation

Jacob, a nine-year-old Digital Harbor Foundation inventor, discovered 3D printing at the 2015 summer camp. He then enrolled in the school year camp and took his toy manufacturing projects all the way to the White House Science Fair. Jacob went on to become a teaching assistant for the Mini Makers program, where he helped other kids design their projects and navigate 3D printing software.

Bon Secours of Maryland Foundation

After joining the Youth Entrepreneurship & Employment Program (YEEP), Ashlie selected the health care track. She was placed in the Bon Secours Hospital dietary department. By utilizing the job-readiness skills she was learning in the program, Ashlie was quickly hired. She began her employment in August 2016.



“WHILE THEY ARE FINDING
THE CURES FOR ALL THE ILLS OF
THE WORLD, SOMEONE WILL
BE HUNGRY, SOMEONE WILL
BE COLD. THAT’S OUR JOB.”

– HARRY WEINBERG



The Harry and Jeanette Weinberg Foundation

7 Park Center Court, Owings Mills, Maryland 21117

Phone: 410-654-8500 Fax: 410-654-4900

www.hjweinbergfoundation.org