



The Harry and Jeanette Weinberg Foundation, Inc.



# GRANTS FOR PEOPLE WITH DISABILITIES

2015 • Volume 12



# OVERVIEW

The Weinberg Foundation provides approximately \$100 million in annual grants to nonprofits that provide direct services to low-income and vulnerable individuals and families, primarily in the US and Israel. Grants are focused on meeting basic needs and enhancing an individual's ability to achieve self-sufficiency with emphasis on older adults, the Jewish community, and the Weinberg Foundation's hometown communities of Maryland, Hawaii, Northeastern Pennsylvania, and Israel.

In the following pages, the Foundation has identified selected grants of \$50,000 or more that were approved and distributed during the past three years (Fiscal Years 2014-2016) to organizations serving people with disabilities. During that time, the Foundation approved more than **60 grants** totaling **\$23.4 million**. Of the total funds approved, **\$13.9 million** has been paid to date.

## OVER THE PAST THREE

---

APPROVED MORE THAN

**60**  
**GRANTS**  
SERVING PEOPLE WITH DISABILITIES

---

TOTALING

**\$23.4**  
**MILLION**

---

OF THE TOTAL FUNDS APPROVED,

**\$13.9**  
**MILLION**  
HAS BEEN PAID TO DATE

---



# YEARS, THE WEINBERG FOUNDATION HAS

- Awarded 25 grants in Israel, totaling nearly \$6 million dollars, to non-profits providing a wide range of disabilities services. These include centers that assist families of children with autism, integrated housing for individuals with developmental and intellectual disabilities, and a program that provides assistive technology for Arab women with disabilities.
- Continued support of programs in Maryland and Illinois to provide deeply-affordable apartments for people with disabilities. Initially funded in 2011, the Weinberg Foundation will provide a total of \$3 million in Maryland and Illinois to finance affordable, quality, integrated apartments for very low-income individuals with disabilities. This program provides persons with disabilities greater choice and independence in their daily lives, including choice of roommate.
- Committed an \$8 million capital grant to support the Kennedy Krieger Institute and its construction of the Weinberg International Rehabilitation Center. This outpatient facility will enable Kennedy Krieger Institute to serve an estimated 30,000 children with neurodevelopmental disorders annually, a 50% increase over current capacity.
- Approved \$1 million to support Mosaic Community Services' renovation of an integrated health care center that will provide multiple, co-located services and treatments for people with mental illness and substance disorder. Mosaic is recognized as the largest provider of mental health and addiction services in Maryland. This organization is an affiliate of Sheppard Pratt and serves an estimated 10,000 unique clients each year, 90% of whom are below the poverty line.

**\$100,113,188**

Total of all Foundation grants distributed since 1990 supporting people with disabilities

Total of all Foundation grants supporting people with disabilities and distributed in Maryland in Fiscal Years 2014-2016

**\$7,153,122**

**\$240,233,552**

Total of all Foundation grants distributed in Fiscal Years 2014-2016



HARRY AND JEANETTE  
WEINBERG FOUNDATION

**LIST OF SELECTED APPROVED AND PAID GRANTS \$50,000 AND LARGER / FY 2014 - 2016**

ORGANIZATION NAME	FISCAL YEAR APPROVED	AMOUNT APPROVED	AMOUNT PAID TO DATE	TYPE OF GRANT
<b>Abilities Network</b> <i>Towson, MD</i> to support Project ACT (All Children Together), a program that will provide inclusion training for early childhood education caregivers and teachers, and individualized services that will help integrate children with disabilities into preschool classrooms	2015	\$165,000	\$165,000	P
<b>Alut - The Israeli National Autism Association</b> <i>Throughout Israel</i> to support this organization's five family centers in Be'er Sheva, Haifa, Jerusalem, Karmiel, and Ramat Gan that assist families of children with autism	2014	\$326,000	\$326,000	P
<b>Amit Shikum</b> <i>Nazareth Elite, Israel</i> to support this evidence-based, non-medical social model known as 'Clubhouse' in which participants with mental illnesses—referred to as members rather than patients or clients—are encouraged to secure jobs and housing	2014	\$140,000	\$140,000	P
<b>ARC of Baltimore</b> <i>Baltimore, MD</i> to support this organization's Customized Employment program that provides job evaluation, training, and development services for individuals with intellectual and developmental disabilities	2014	\$160,000	\$160,000	P
<b>The Arc of Howard County</b> <i>Ellicott City, MD</i> to support Project SEARCH, a one-year workforce training program for students with disabilities whose goal upon graduating high school is employment with the Howard County government	2014	\$110,000	\$110,000	P
<b>Arugot Child and Family Development Center</b> <i>Haifa, Israel</i> to support this organization that provides therapy programs for children with learning disabilities	2014	\$150,000	\$150,000	P
<b>The Association for Children at Risk</b> <i>Givat Shmuel, Israel</i> to support evidence-based assessment and intervention services for individuals with autism spectrum disorders	2014	\$160,000	\$160,000	P
<b>The Association for Developing Community Services in Sha'ar HaNegev</b> <i>Ashkelon, Israel</i> to support the renovation of a hydrotherapy center serving older adults and individuals with disabilities	2014	\$100,000	\$100,000	C
<b>The Association for Innovation and Advancement of Quality of Life for Persons with Disabilities</b> <i>Moshav Avichail, Israel</i> to support the transition of individuals with disabilities from institutions to integrated community residences	2016	\$130,000	\$0	P
<b>The Association of Development of Welfare Services in Lod</b> <i>Lod, Israel</i> to support the construction of two classrooms with adjoining therapy areas, in the Mashal Rehabilitative Daycare Center, for children on the autism spectrum, ages 1 to 4	2016	\$270,000	\$0	C
<b>Association of People with Disabilities in Haifa and the North District</b> <i>Haifa, Israel</i> to support the renovation of this Center for Independent Living that promotes employment and independent living for individuals with multiple disabilities	2015	\$234,000	\$234,000	C
<b>The Auditory Oral School Of New York</b> <i>Brooklyn, NY</i> to support the construction of a specialty wing for deaf children that will include an occupational and physical therapy center, a library and literacy center, and a sensory integration room	2014	\$300,000	\$300,000	C
<b>A.V. Israel</b> <i>Jerusalem, Israel</i> to support the general operations of this organization that provides hearing-impaired children with the opportunity to communicate through spoken language using cochlear implants and intensive therapy	2014	\$300,000	\$200,000	O
<b>Baltimore Crisis Response</b> <i>Baltimore, MD</i> to support the purchase and renovation of a facility that will expand the number of residential crisis beds for individuals with mental illness	2015	\$500,000	\$500,000	C
<b>Beit Shemesh Community Centers Network</b> <i>Beit Shemesh, Israel</i> to support the construction of a child development therapy center for children, infancy to age nine, at risk for developmental delays	2014	\$500,000	\$0	C

C - Capital Project O - General Operating Support P - Program Support

□ - Grants in the US □ - Grants in Israel, the Former Soviet Union (FSU), and other countries outside the US

**4 | Grants for People with Disabilities (FY 2014 - 2016)**

LIST OF SELECTED APPROVED AND PAID GRANTS \$50,000 AND LARGER / FY 2014 - 2016

ORGANIZATION NAME	FISCAL YEAR APPROVED	AMOUNT APPROVED	AMOUNT PAID TO DATE	TYPE OF GRANT
<b>Beth David Institute</b> <i>Tel Aviv, Israel</i> to support this organization's computer learning program that provides computer skills for deaf and blind individuals including alternative means of communication	2014	\$80,000	\$80,000	P
<b>Bizchut, The Israel Human Rights Center for People with Disabilities</b> <i>Jerusalem, Israel</i> to support a program that provides legal aid services for individuals with physical, sensory, intellectual, and psychiatric disabilities and their families	2016	\$100,000	\$100,000	P
<b>B'More Clubhouse</b> <i>Baltimore, MD</i> to support the general operations of this organization that provides direct services for individuals affected by mental illness	2014	\$50,000	\$50,000	O
<b>Cal Ripken Sr. Foundation</b> <i>Baltimore, MD</i> to support the construction of a safer, more functional outdoor space at Kennedy Krieger High School for children with disabilities	2014	\$75,000	\$75,000	C
<b>CHAI: Comprehensive Housing Assistance, Inc.</b> <i>Baltimore, MD</i> to support the purchase and renovation of a house that will serve residents with mental illness	2016	\$120,000	\$120,000	C
<b>Community Support Services</b> <i>Gaithersburg, MD</i> to support the purchase of five townhomes that will enable ten adults with autism to live safely and independently in their community	2015	\$339,000	\$339,000	C
to support the purchase of a townhouse that will provide services for adults with autism	2014	\$62,000	\$62,000	C
<b>Dyslexia Tutoring Program</b> <i>Baltimore, MD</i> to support a tutoring program that teaches children and adults with dyslexia to read	2015	\$210,000	\$140,000	P
to support the general operations of this organization that helps children and adults learn to read	2014	\$70,000	\$70,000	O
<b>Eliya, the Israel Association for the Advancement of Blind and Visually Impaired Children</b> <i>Be'er Sheva, Israel</i> to support the construction of a rehabilitative day care center for blind and visually impaired children	2016	\$250,000	\$0	C
<b>Exceptional Minds</b> <i>Sherman Oaks, CA</i> to support the general operations of this organization that provides young adults on the autism spectrum with customized instruction and hands-on experience in the fields of multi-media, computer animation, and post production	2016	\$50,000	\$50,000	O
<b>The Haifa Learning Enhancement Center</b> <i>Haiifa, Israel</i> to support the general operations of this organization that provides a treatment program for children with learning disabilities who are at risk of dropping out of school	2014	\$300,000	\$200,000	O
<b>Hebrew Education Society</b> <i>Brooklyn, NY</i> to support the launch of the Medicaid Waiver Respite program that will provide outreach, support, and after-school respite for families of children with disabilities	2014	\$50,000	\$50,000	P
<b>Homeless Persons Representation Project</b> <i>Baltimore, MD</i> to support the Veterans Legal Assistance Project that helps veterans with disabilities obtain benefits	2014	\$110,000	\$110,000	P
<b>Housing Unlimited</b> <i>Silver Spring, MD</i> to support the acquisition and rehabilitation of five properties that will provide permanent, affordable, and independent housing for adults with psychiatric disabilities	2014	\$390,000	\$390,000	C
<b>Israel Elwyn</b> <i>Kiryat Bialik, Israel</i> to support the construction of a rehabilitative day care center that provides inclusive programs for children, birth to age three, with intellectual and developmental disabilities	2016	\$300,000	\$0	C
<b>Israel Family Planning Association</b> <i>Tel Aviv, Israel</i> to support the 'Sexuality Educator' training program that allows disabled professionals in the disabilities field to teach other disabled individuals about intimacy, healthy sex, and the prevention of sexual abuse	2014	\$100,000	\$100,000	P
<b>Israel Sport Center for the Disabled</b> <i>Ramat Gan, Israel</i> to support the renovation of a gym that serves children and adults with disabilities	2014	\$245,000	\$245,000	C

C - Capital Project O - General Operating Support P - Program Support

□ - Grants in the US ■ - Grants in Israel, the Former Soviet Union (FSU), and other countries outside the US

**LIST OF SELECTED APPROVED AND PAID GRANTS \$50,000 AND LARGER / FY 2014 - 2016**

ORGANIZATION NAME	FISCAL YEAR APPROVED	AMOUNT APPROVED	AMOUNT PAID TO DATE	TYPE OF GRANT
<b>JARC Farmington Hills, MI</b> to support the Independent Living Services program that provides person-centered assistance for adults with disabilities living in their homes	2014	\$120,000	\$120,000	P
<b>Jewish Family Services Milwaukee, WI</b> to support the construction of 54 affordable, integrated apartments that will house individuals with disabilities and/or chronic mental illness	2015	\$880,000	\$880,000	C
<b>The Jubilee Association of Maryland Kensington, MD</b> to support the renovation of four group homes serving older adults with developmental disabilities	2014	\$75,000	\$75,000	C
<b>Kennedy Krieger Institute Foundation Baltimore, MD</b> to support the construction of the Weinberg International Rehabilitation Center, an outpatient facility serving children with neurodevelopmental disorders	2014	\$8,000,000	\$1,600,000	C
<b>Kfar Tikva Kiryat Tiv'on, Israel</b> to support the purchase of a house that will accommodate four young adults with developmental, intellectual, and emotional disabilities	2016	\$155,000	\$155,000	C
to support the purchase and renovation of a house and a passenger minivan that will accommodate young adults with developmental and intellectual disabilities	2015	\$195,000	\$195,000	C
<b>Kivunim: New Directions for Special Needs Youth in Israel Haifa, Israel</b> to support the general operations of this organization that provides rehabilitation and integration services for individuals with disabilities	2014	\$200,000	\$200,000	O
<b>Legal Clinic for the Disabled Philadelphia, PA</b> to support the general operations of this organization that provides legal services for individuals with physical disabilities	2014	\$100,000	\$100,000	O
<b>The Luzerne Foundation Luzerne, PA</b> to support a mental health assessment with the goal of addressing service gaps and needs within the region	2014	\$100,000	\$100,000	P
<b>Main Street Housing Baltimore, MD</b> to support the purchase and renovation of three properties that will house at least nine residents with psychiatric disabilities	2014	\$197,000	\$197,000	C
<b>MICHA - Society for Education of Deaf Children Be'er Sheva, Israel</b> to support the expansion of this center, including the purchase of audiology equipment, for children who are hearing impaired	2014	\$400,000	\$400,000	C
<b>MICHA JERUSALEM Association for the Rehabilitation of Deaf &amp; Hard of Hearing Children Jerusalem, Israel</b> to support the construction of a new preschool, kindergarten, and speech therapy center serving deaf and hearing-impaired children, birth to age five	2014	\$650,000	\$650,000	C
<b>Milbat Tel Hashomer, Israel</b> to support the general operations of this organization that works to improve the independence and safety of older adults and individuals with disabilities through the use of assistive technology	2014	\$210,000	\$210,000	O
<b>Mosaic Community Services Timonium, MD</b> to support the renovation of an integrated health care center that will include a range of co-located treatments for mental illness and substance abuse	2014	\$1,000,000	\$500,000	C
<b>NAMI Metropolitan Baltimore Baltimore, MD</b> to support the general operations of this organization that provides free educational programs, support groups, and informational seminars for people with mental illness	2014	\$80,000	\$80,000	O
<b>National Alliance for the Mentally Ill of New York City New York, NY</b> to support the general operations of this organization that provides free educational programs, support groups, and informational seminars for individuals with mental illness	2014	\$80,000	\$80,000	O
<b>National Alliance on Mental Illness Arlington, VA</b> to support a modification of the Family-to-Family program that will provide a range of services for military personnel and their families	2014	\$60,000	\$60,000	P

C - Capital Project O - General Operating Support P - Program Support

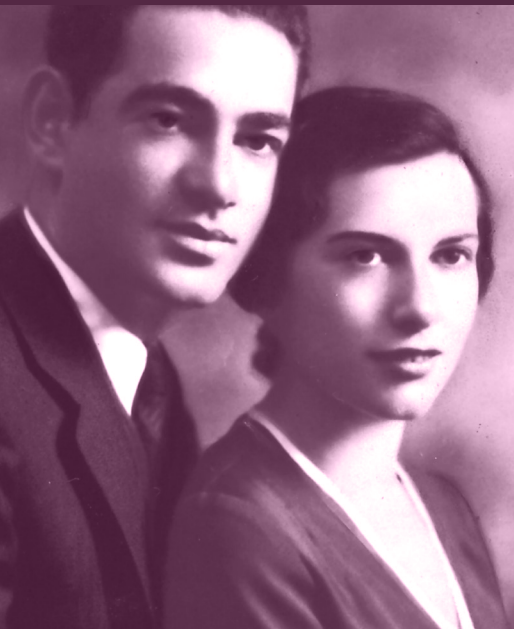
☐ - Grants in the US ☐ - Grants in Israel, the Former Soviet Union (FSU), and other countries outside the US

LIST OF SELECTED APPROVED AND PAID GRANTS \$50,000 AND LARGER / FY 2014 - 2016

ORGANIZATION NAME	FISCAL YEAR APPROVED	AMOUNT APPROVED	AMOUNT PAID TO DATE	TYPE OF GRANT
<b>The Nazareth Nurseries Institute, Al-Tufula Center</b> <i>Nazareth, Israel</i> to support a program that provides assistive technology for Arab women with disabilities	2014	\$70,000	\$70,000	P
<b>The Netanya Foundation</b> <i>Netanya, Israel</i> to support the construction of a rehabilitative day care center, operated by ALUT, that will serve children with autism	2016	\$430,000	\$0	C
<b>New Jersey Federation Young Men's Hebrew Association/Young Women's Hebrew Association (YMHA/YWHA)</b> <i>Fairfield, NJ</i> to support the relocation of a therapeutic residential summer camp with the goal of integrating children with and without disabilities	2014	\$141,000	\$141,000	C
<b>Northeast Pennsylvania Center for Independent Living</b> <i>Scranton, PA</i> to support the Weinberg High-Functioning Autism program that provides academic and workforce training, including time management and social skills	2016	\$150,000	\$75,000	P
<b>NYSARC (New York State Chapter of The ARC), Monroe County Chapter</b> <i>Rochester, NY</i> to support the purchase and construction of a new community integration building for adults with intellectual and behavioral disabilities	2014	\$250,000	\$250,000	C
<b>Pocono Environmental Education Center</b> <i>Dingmans Ferry, PA</i> to support a summer camp and family respite program that will provide a fully inclusive experience for children and young adults with special needs	2015	\$100,000	\$100,000	P
	2014	\$50,000	\$50,000	P
<b>PTACH Israel</b> <i>Jerusalem, Israel</i> to support a reading program at this clinic for children with learning disabilities	2015	\$150,000	\$150,000	P
<b>Saint Joseph's Center</b> <i>Scranton, PA</i> to support the general operations of this organization that provides individuals with disabilities the opportunity to develop their abilities to the fullest extent possible with special emphasis on companion services, respite care, and supportive living	2016	\$250,000	\$125,000	O
<b>Seeach Sod</b> <i>Jerusalem, Israel</i> to support the expansion of an existing respite center for orthodox youth with intellectual disabilities, allowing families to take vacations or spend more time with siblings	2014	\$230,000	\$230,000	C
<b>Shikum Acher</b> <i>Petach Tikva, Israel</i> to support the construction of a career advancement center that will help individuals with mental illness prepare for and secure employment	2016	\$213,000	\$213,000	C
	<i>Tel Aviv, Israel</i> to support this organization's employment program that helps individuals with mental illness integrate into the job market through professional guidance	2014	\$80,000	\$80,000
<b>Stepping Stones Learning Center</b> <i>Rochester, NY</i> to support the renovation of a facility that provides an inclusive learning center for children with autism	2014	\$500,000	\$250,000	C
<b>Sulam Special Education Center</b> <i>Jerusalem, Israel</i> to support the completion of an outdoor playground and a warm-water hydrotherapy pool for children with developmental disabilities	2015	\$198,000	\$198,000	C
<b>Tucson Jewish Community Center</b> <i>Tucson, AZ</i> to support the construction of a classroom, activity space, and indoor playground that will provide inclusive programs for children with and without disabilities	2016	\$300,000	\$300,000	C
<b>United Neighborhood Community Development Corporation</b> <i>Scranton, PA</i> to support the construction of a 30-unit affordable housing project, including apartments renting at 20% Area Median Income, an amount that is affordable to people with disabilities who rely on Social Security Disability Income (SSDI) or Social Security Income (SSI)	2014	\$879,000	\$879,000	C
<b>Way Station</b> <i>Frederick, MD</i> to support the purchase of affordable and supportive permanent housing for 25 individuals with mental illnesses	2015	\$530,000	\$530,000	C

C - Capital Project O - General Operating Support P - Program Support

☐ - Grants in the US ☐ - Grants in Israel, the Former Soviet Union (FSU), and other countries outside the US



“WHILE OTHERS ARE FINDING  
THE CURES FOR ALL THE ILLS OF  
THE WORLD, SOMEONE WILL  
BE HUNGRY, SOMEONE WILL  
BE COLD. THAT’S OUR JOB.”

– HARRY WEINBERG



**The Harry and Jeanette Weinberg Foundation, Inc.**

7 Park Center Court, Owings Mills, Maryland 21117

Phone: 410-654-8500 Fax: 410-654-4900

[www.hjweinbergfoundation.org](http://www.hjweinbergfoundation.org)