



The Harry and Jeanette Weinberg Foundation

# Foundation Overview

2022

# Who We Are

The Harry and Jeanette Weinberg Foundation, one of the largest private charitable foundations in the United States, is dedicated to meeting the basic needs of people experiencing poverty.

In 2022, the Foundation expects to provide approximately \$150 million in total grant activity supporting nonprofits that provide direct services in the areas of **Housing, Health, Jobs, Education, and Community Services**. These focus areas, as well as the 14 funding priorities that guide the Foundation's grantmaking, are detailed on pages 19 through 30. The funding priorities address a range of populations, including older adults, women at risk and their children, people with disabilities, veterans, and the Jewish community.

To learn more about the Foundation, please visit [www.hjweinbergfoundation.org](http://www.hjweinbergfoundation.org).



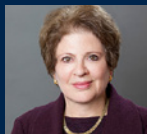
## Our History

Like most immigrants coming to the United States in the early 1900s, Harry Weinberg's family arrived with little more than hope and a willingness to work hard. Beyond their many challenges, they saw opportunity.

Harry was gifted with a keen business mind and entrepreneurial spirit. Despite leaving school at age 12, Harry built a career that turned one successful investment into another, often seeing value where others did not. In the 1950s and 1960s, he owned bus lines in several cities, including Honolulu, Hawai'i. Again seeing opportunity, and before many others recognized the eventual value of real estate in Hawai'i, Harry began purchasing properties throughout the Hawaiian Islands. At the time of his death, Harry Weinberg was the largest single real estate investor in Hawai'i.

However, Harry never forgot his humble roots. In 1959, he created The Harry and Jeanette Weinberg Foundation to help meet the needs of low-income and vulnerable people. The Foundation as we know it today has existed since 1990, when Harry Weinberg died, a year after his beloved wife, Jeanette, passed away. Today, the fortune that Harry amassed has grown to \$3.3 billion—the assets that make possible the Weinberg Foundation's grantmaking.

## Our Leadership



**Ambassador  
Fay Hartog-Levin (Ret.)**  
*Chair and Trustee*



**Robert T. Kelly, Jr.**  
*Trustee*



**Paula B. Pretlow**  
*Trustee*



**Gordon Berlin**  
*Trustee*



**Nimrod Goor**  
*Trustee*



**Rachel Garbow Monroe**  
*President and CEO*

## Commitment to the Jewish Community

The Weinberg Foundation supports organizations that serve people experiencing poverty within the Jewish community, both in the United States and Israel. Grants to support the Jewish community align with the Foundation's funding priorities within the areas of Housing, Health, Jobs, Education, and Community Services.

In Israel, the Foundation has a long history of supporting direct service-providers, including the American Jewish Joint Distribution Committee's (JDC) work dedicated to serving vulnerable older adults (Eshel) and providing job training for low-income populations (TEVET). In 2018, the Foundation expanded its commitment in Israel to organizations serving women at risk and their children.

In North America, over nearly three decades, the Foundation has provided approximately \$30 million to organizations serving Holocaust survivors, and in Baltimore the Foundation is the largest contributor to The Associated: Jewish Federation of Baltimore (The Associated), providing one of the single largest annual campaign gifts to any Jewish Federation.

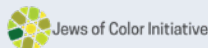
The Foundation is also engaged in a range of proactive strategic initiatives (please see adjacent page) focused on addressing Jewish poverty on a national scale, especially through its leading role in founding the National Affinity Group on Jewish Poverty. In addition, the Foundation supports various initiatives which strengthen the Jewish nonprofit sector at-large, including those working to develop the next generation of leaders and promote diversity, equity, and inclusion within the Jewish community.

# Key Jewish Community Initiatives



## National Affinity Group on Jewish Poverty

In partnership with the Jewish Funders Network, the Foundation is supporting a nationwide collaborative effort dedicated to addressing the issue of poverty within the Jewish community throughout the United States. This affinity group was founded at the inaugural National Convening on Jewish Poverty in San Francisco on March 19, 2019, where more than 200 experts on Jewish poverty, including researchers, direct-service providers, federation leaders, and philanthropists attended and pledged to bring more focus to this issue. Specific goals identified to date include assembling reliable and uniform data on Jewish poverty in America; changing the narrative around Jewish poverty; and developing, aggregating, and sharing best practices and models of poverty alleviation.



## Jews of Color Initiative

The Jews of Color Initiative (JOCI) is a national effort focused on building and advancing the professional, organizational, and communal field for Jews of Color through grantmaking, research, and community education. The Foundation has committed more than \$2 million to JOCI and related efforts.



## Leading Edge

Leading Edge helps Jewish organizations attract, develop, and retain top talent. This organization offers a cohort-based program for onboarding new CEOs, strengthens partnerships between lay leaders and professionals, and conducts original research, including its annual employee engagement survey. The Foundation has contributed more than \$3 million in support of this organization.



## Yashar - Support for Inclusion at Jewish Camp

In partnership with the Foundation for Jewish Camp, the Weinberg Foundation has committed \$12 million to this grants initiative. The Yashar Initiative aims to enhance accessibility and inclusion for campers and staff with disabilities by providing capital improvements, professional development, staff training, research, and evaluation to both participating camps and the field at-large.



## SafetyRespectEquity

The SafetyRespectEquity (SRE) Network works to ensure safe, respectful, and equitable Jewish workplaces and communal spaces. Through convenings, research, and development of national standards, this organization seeks to advance women's leadership and gender equity, as well as address sexual harassment, sexism, and gender discrimination. The Foundation has committed more than \$1 million to support the SRE Network.

# Where We Give

The Weinberg Foundation administers the majority of its funding in its priority communities:

- Baltimore
- Chicago
- Hawai'i
- Israel
- New York City
- Northeastern Pennsylvania
- San Francisco

This includes supporting nonprofits serving federally designated rural areas within, or adjacent to, these priority communities. All of these locations represent personal ties to the life and legacy of Harry Weinberg, as well as communities where Weinberg Foundation trustees reside and provide leadership.

All requests for funding should align with the Foundation's grantmaking priorities within at least one of the focus areas (see pages 19-30).

## Our Offices



**Baltimore, Maryland**  
7 Park Center Court  
Owings Mills, MD 21117  
410-654-8500



**Honolulu, Hawai'i**  
3660 Waialae Avenue  
Suite 400  
Honolulu, HI 96816  
808-924-1000





# Select Initiatives Within Priority Communities

## **COVID-19 Response**

To date, the Weinberg Foundation has committed a total of \$10.5 million in COVID-19 emergency funding across all of its priority communities. The Foundation is committed to supporting current grantees that are providing vital services within their communities while facing severe operational challenges as a result of the pandemic.

As part of its long-term COVID-19 response, the Foundation has committed an additional \$7.5 million in grants to three Community Development Financial Institutions (CDFIs). CDFIs provide loans and financial services to communities, particularly communities of color, where conventional financing is typically unavailable or unaffordable.





# Baltimore: Our Hometown

The Greater Baltimore region has served as home to the Foundation's headquarters since its founding by Harry and Jeanette Weinberg in 1959. The Foundation as we know it today has existed since 1990. Today, nearly 25 percent of the Foundation's approximately \$150 million in annual grantmaking supports direct service providers in Greater Baltimore.

## Select Grants and Initiatives

- **Aging in Community Collaboratives**  
(Find more on this initiative under Health, page 24.)
- **Deeply Affordable Housing**  
(Find more on this initiative under Housing, page 22.)
- **Baltimore Elementary and Middle School Library Project**  
(Find more on this initiative under Education, page 28.)
- **Baltimore Summer Funding Collaborative**  
(Find more on this initiative under Education, page 28.)
- **Wage Record Study for Maryland Grantees**  
(Find more on this initiative under Jobs, page 26.)

## Focus on Neighborhoods

In 2019, the Foundation adopted a special focus on neighborhoods. For example, the Foundation has joined with Central Baltimore Partnership and others to enhance access to health care, healthy food, and youth opportunities for the residents of Midway, Barclay, and Greenmount West.





# Chicago

Recent grants have focused on the following areas:

- Out-of-school time programs that prepare young people for postsecondary success
- Job-training programs that result in industry-recognized credentials
- Strengthening neighborhoods through direct service grants to community organizations
- Addressing housing instability and homelessness

## Select Grants and Initiatives

- **Partnership for Safe and Peaceful Communities**  
The Foundation participates in this partnership of philanthropic organizations committed to reducing gun violence in Chicago by aligning their grantmaking and collaborating with community leaders and organizations, as well as those in the public and private sectors.
- **Chicagoland Workforce Funder Alliance**  
The Foundation is a member of this initiative and supports several workforce development programs that provide job-training, placement, and retention services.
- **Chicago Funders Together to End Homelessness**  
The Foundation is a member of this effort that supports several programs aimed at reducing homelessness, including All Chicago, which leads coordination of homeless services across the city.





# Hawai'i

Today, the Foundation invests approximately \$12 million annually in nonprofit organizations operating in Hawai'i that have a core focus on serving vulnerable individuals and families, particularly in rural areas of the islands.

## Select Grants and Initiatives

- **Native Hawaiian Community-Based Youth Initiatives**  
These collaborative efforts, most of them in rural communities, provide at-risk youth with leadership skills, strengthened connections to land and culture, career and college preparation, work-based learning opportunities, and improved health outcomes.
- **Rural Community Health Centers**  
(Find more on this initiative under Health, page 24.)
- **Collaborative Solutions to End Homelessness**  
The Foundation is an active participant in Hawai'i's Continuum of Care and provides grants along the pathway to housing stability from street outreach to the development of permanent, affordable housing with supportive services.
- **Resilient Local Food Systems**  
To improve food security throughout Hawai'i, the Foundation invests in networks of nonprofit organizations, local farmers and producers, and community health centers working together to rebuild community food systems.
- **Hawai'i Workforce Funders Collaborative**  
The Foundation is a founding member of this partnership of philanthropic organizations working to ensure all Hawai'i residents have access to high-quality jobs that strengthen communities and families.



# Israel

Today, the Foundation invests approximately \$18 million annually to support direct services focused on the following areas:

- **Aging in Community**

The Foundation has partnered with the National Insurance Institute of Israel (NII) or, as it is known in Israel, Bituach L'Umi, to deliver capital projects serving older adults. Since 2017, the Foundation has provided 19 capital grants totaling just over \$10 million. Projects include assisted living housing, as well as day care centers that provide a range of services for older adults enabling them to age independently and with maximum quality of life within their own home.

- **Jobs**

The Foundation supports non-academic, technical training programs leading to economic independence. Projects may serve a range of populations, including but not limited to Israeli-Arab citizens, the Haredi or ultra-Orthodox population, Ethiopian Israelis, women at risk, older adults, and adults with disabilities.

- **Women at Risk and Their Children**

The Foundation supports organizations and programs that meet the needs of women at risk and their children in Israel, including those experiencing homelessness, escaping domestic violence and other forms of abuse, transitioning from sex work, or experiencing unstable employment.







# New York City

The Foundation's grantmaking in New York City covers the five boroughs of Manhattan, Brooklyn, the Bronx, Queens, and Staten Island.

## Select Grants and Initiatives

- **Solutions to End Homelessness**

In New York City, the Foundation supports organizations that focus on moving people/families out of homelessness.

- **Alleviating Poverty Within the Jewish Community**

New York City is home to the largest Jewish population in the United States, and 361,100 individuals—20 percent of the Jewish community in the city—live below 150 percent of the federal poverty level (defined as \$33,000 for a family of four). The Foundation supports several initiatives focused on Jewish poverty in New York City, including alleviating food insecurity and providing comprehensive services and supports to older adults.

- **Jobs**

The Foundation supports job-training programs that result in industry-recognized credentials, as well as job-placement and retention services. In New York City, the Foundation supports programs in many sectors, including but not limited to information technology, healthcare, facilities management, woodworking, construction, food service, and administrative and customer service.

- **LGBTQ Older Adults**

In New York City in particular, the Foundation has provided program support for caregivers and nonprofits that are dedicated to helping LGBTQ older adults age independently and with maximum quality of life.



# Northeastern Pennsylvania (NEPA)

The Foundation's grantmaking in Northeastern Pennsylvania covers Scranton and the surrounding counties.

## Select Grants and Initiatives

- **Workforce Development**

The Foundation supports quality training programs that lead to employment resulting in economic stability for individuals and families. This includes job-training programs that result in industry-recognized credentials, as well as job-placement and retention services. The Foundation also supports programs that provide people with the financial tools necessary to achieve economic stability.

- **Older Adults and Aging Services**

The Foundation has a special focus on helping low-income older adults age in their communities with maximum independence and quality of life. The Foundation prioritizes funding projects that provide comprehensive No Wrong Door service delivery models and that highlight collaboration between multiple nonprofits, government, and/or the business community—crucial to long-term sustainable success in the region.





# San Francisco

The Foundation's grantmaking covers the entire Bay Area, including Alameda, Contra Costa, Marin, Napa, San Francisco, San Mateo, Santa Clara, Solano, and Sonoma counties.

## Select Grants and Initiatives

- **Youth and Family Homelessness**

In 2019, the Foundation joined the Rising Up Campaign as a funder—supporting this public-private partnership between the City of San Francisco, local nonprofits, and philanthropic partners—with the goal of reducing youth homelessness in San Francisco by 50 percent by 2023. The Foundation supports this and other initiatives and organizations that are working to solve the issue of youth and family homelessness.

- **Out-of-School Time**

The Foundation supports out-of-school time and summer programs working at scale in the Bay Area. Of particular interest are programs that emphasize academic achievement, but which also include enrichment opportunities.

- **College and Career Preparedness**

Although the Foundation does not fund colleges and universities directly, it is interested in partnering with organizations that support students on pathways to and through college, community college, or career training.

## A Partnership with Stockton, CA

The Foundation has committed \$3.7 million over three years to support several key initiatives aimed at improving the lives of Stockton residents, including Reinvent Stockton Foundation (supporting Stockton Scholars and Stockton Service Corps), as well as Advance Peace.



# Rural Communities

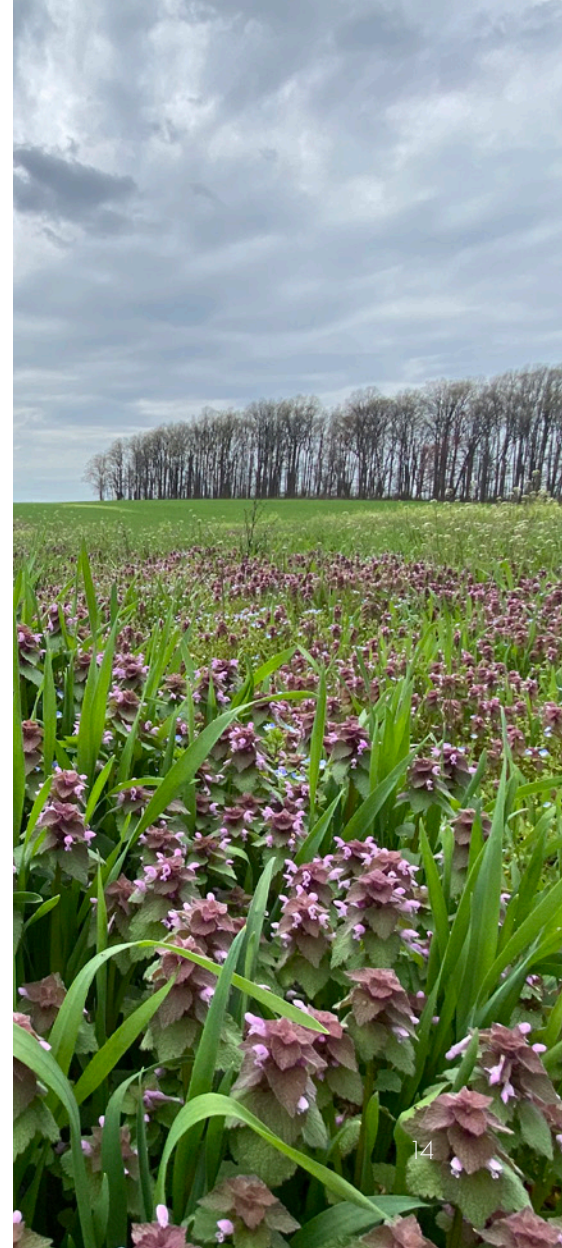
Rural America experiences disproportionate rates of poverty as compared with suburban and urban areas. For example, of the 429 US counties facing persistent and intractable poverty, 86 percent are rural. In addition, rural nonprofits do not have equitable access to the resources needed to sustain local solutions. Nonprofit organizations that are located in rural areas, both within or proximate to the Foundation's priority communities, are eligible to apply for capital, program, and operating grants within the Foundation's focus areas of Housing, Health, Jobs, Education, and Community Services. Because the Foundation's rural grantmaking focuses on regional collaborations and cross-sector solutions, nonprofit applicants must be located in places eligible for rural-designated funding from federal programs.

## Multi-year Special Initiative

The Foundation has launched a strategic initiative focused on two priority communities that are largely rural: Hawai'i and Northeastern Pennsylvania. This strategic initiative prioritizes the following projects:

1. Capacity building for regional networks in Hawai'i and Northeastern Pennsylvania that collaborate to bring additional public and private resources to rural projects
2. Increasing the capacity of local Community Development Financial Institutions (CDFIs) that serve rural nonprofit organizations and families
3. Expanding rural access to affordable housing, health care, and local food systems, including creating strong pathways for local youth to enter the workforce that sustains these crucial services

Through this initiative, the Foundation also engages with select national organizations, technical assistance providers, and peer foundations whose work creates a strong learning exchange for our rural priority communities and nonprofit partners.



# How We Give

The Weinberg Foundation's grantmaking reflects the wishes of Harry and Jeanette Weinberg, as outlined in the Foundation's charter, as well as the laws and public policy that govern private philanthropy in the United States and Israel.

The Foundation's Program Committee (comprised of the trustees, president and CEO, and program team) is responsible for the Foundation's grantmaking and meets regularly to make decisions regarding the award and distribution of grant funds.

The Foundation's funding takes the form of capital, program, and operating grants. Grants should be requested through an online application process. [www.hjweinbergfoundation.org/how-we-give/how-to-apply/apply-for-a-grant](http://www.hjweinbergfoundation.org/how-we-give/how-to-apply/apply-for-a-grant)

## Eligibility

To be considered for funding, an organization must meet several requirements:

- Be a nonprofit organization with 501(c)(3) tax-exempt status; or have a fiscal sponsor that has 501(c)(3) tax-exempt status; or be an Israeli equivalent.
- Provide direct services to low-income and vulnerable populations.
- Have audited financial statements or external financial reviews.
- Have been in operation for at least three years.

*Please see page 18 for information regarding the Foundation's special grant programs.*

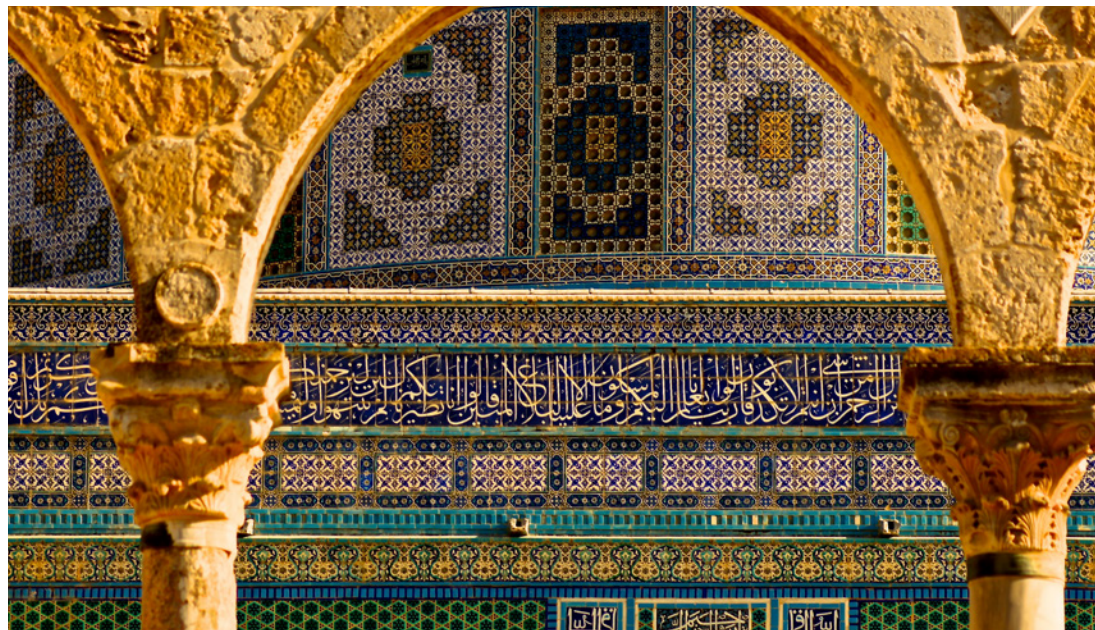
## The Foundation does not fund the following interests/entities:

- Individuals
- Arts and culture
- Post-secondary scholarships
- Debt reduction
- Colleges and universities
- Religious institutions and facilities (including churches, synagogues, congregations, mosques, and temples)
- Think tanks
- Endowments
- Political action groups
- Annual appeals (in most cases)
- Publications
- Academic or health research
- Fundraising events

*Please note: the Foundation and the Foundation's individual staff and trustees do not accept awards or honors from past, present, or potential grantee organizations.*









# Special Programs

## Small Grants Program (SGP)

Through the Small Grants Program (SGP), the Foundation supports nonprofits with a streamlined grant application and review process. Grants awarded under the SGP—operating, program, or capital—must still align with the Foundation's strategic priorities in the areas of Housing, Health, Jobs, and Education.

The maximum Small Grant amount is \$50,000 over two years. Organizations are eligible to apply if they meet the Foundation's eligibility criteria (see page 15).

## Baltimore City Community Grants Program

This program was created to provide one-time support to small nonprofits (with an annual operating budget of \$500,000 or less) that serve low-income individuals and families in Baltimore City through direct services. Eligible organizations may apply for up to \$10,000 for one year in order to assist with general operating expenses, program, or capital costs, including equipment purchases, capacity building (e.g., evaluation and audit costs), and other eligible expenses.

*Please visit our website, [www.hjweinbergfoundation.org](http://www.hjweinbergfoundation.org), for details on how to apply to our Small Grants Program and Baltimore City Community Grants Program.*

## Employee Giving Program

This biennial program allows each Foundation staff member, not including the president and CEO, to recommend a \$20,000 grant to a nonprofit of their choice consistent with the Foundation's grantmaking goals and guidelines. Employees handle every step of the grant evaluation, including a site visit, review of financials, and preparation of the final grant recommendation. Organizations may not apply for the Employee Giving Program.

## Israel Mission & Alumni Scholars Program

For nearly two decades, the Weinberg Foundation has been privileged to bring prominent community and government leaders from the Foundation's priority communities to visit Israel.

Participants have the opportunity to meet with major Israeli political and community representatives, including social-service agencies that reflect the Foundation's approximately \$18 million in annual grantmaking in Israel. The Mission trip has allowed participants to learn from, and share information with, Israeli nonprofits and experts.

The Foundation also introduces participants to experts on poverty in Israel who share several of the major challenges the country faces both now and in the future. The Foundation sees this trip as an opportunity to provide leaders of similar organizations with relevant data and information.

# Focus Areas

The Weinberg Foundation fulfills its mission of meeting the basic needs of people experiencing poverty by providing grants across five focus areas. These grants serve a range of populations primarily within the Foundation's priority communities.

Most grant requests should align with one of these four core focus areas:



Housing



Jobs



Health



Education

The Community Services focus area is intended for community organizations operating multiple programs that meet a range of needs, spanning these four core focus areas.







# Housing

Stable housing provides a foundation for individuals, children, and families to lead healthy and productive lives. Without housing, people are unable to focus on education, employment, health care, and other basic needs.







## Areas of Funding

1. **Affordable Housing Development and Renovation:** The Foundation supports the creation of new housing units, as well as the renovation of existing housing, to provide and maintain affordable, quality, and supportive housing options. Projects should be integrated into the broader community and must incorporate supportive services. Priority is given to projects that add new units of housing into a community.
2. **Maintaining Stable Housing:** The Foundation supports programs that allow people to secure or sustain permanent housing within their communities by providing comprehensive services that meet a range of social, economic, and health needs.

## Key Initiatives

### Deeply Affordable Housing



The Foundation has committed \$8 million for programs in Maryland and Illinois to provide deeply affordable housing for people with disabilities. In partnership with state agencies, these programs create affordable apartments that enable eligible individuals to live independently and within their communities.

### Rapid Re-Housing and Employment



Over the past several years, the Foundation has supported the expansion of Rapid Re-Housing in Baltimore City to help more families move quickly out of homelessness. This effort includes a total of \$2.25 million awarded to St. Vincent de Paul to help families with short-term financial assistance and case management and to assist individuals with job search and placement.



# Health

Good health is essential to help people move and remain out of poverty. Poor physical or mental health can prevent or complicate the pursuit of education, employment, and other opportunities for economic mobility.





## Areas of Funding

1. **Health Care Access:** The Foundation supports organizations that provide access to health care, as well as those that work to improve the health status of vulnerable patients.
2. **Aging in Community:** The Foundation supports projects that enable older adults to remain independent. Projects must incorporate a model that connects older adults and/or caregivers with a range of services that help them age independently, within their communities, and with maximum quality of life.
3. **Veteran Mental Wellness:** The Foundation supports programs that enhance the mental wellness of veterans who are reintegrating into civilian life.
4. **Nutrition and Food Access:** The Foundation supports organizations and programs that increase access to sufficient and nutritious food.
5. **Trauma, Abuse, and Safety:** The Foundation supports programs that promote family safety and that reduce the long-term traumatic effects of abuse and neglect, sexual assault, intimate partner or family violence, elder abuse, and exposure to community violence.

## Key Initiatives

### Aging in Community Collaboratives

Housing Upgrades to Benefit Seniors (HUBS) in Baltimore City and Baltimore County Age-friendly Upgrades for Seniors (BCAUSE) are collaborations of nonprofits, local government, and philanthropy to enable low-income older adult homeowners to remain independent by providing home modifications and repairs—including grab bars, electrical and plumbing repairs, and roof and furnace replacements—in addition to wraparound services. To date, the Foundation has invested \$13.8 million in these initiatives, which serve more than 3,400 older adults.

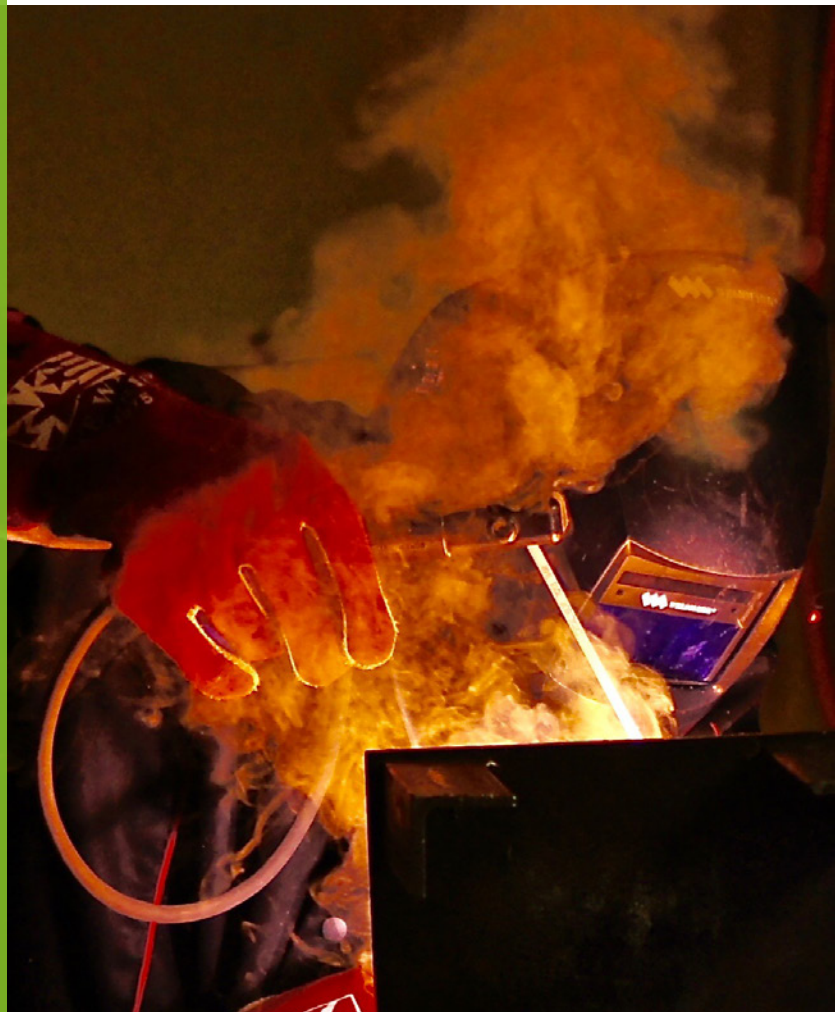
### Community Health Centers

The Foundation supports Federally Qualified Health Centers (FQHCs) across its priority communities in an effort to expand access to dental and behavioral health care. This initiative has been particularly important in Hawai'i and rural areas where access is severely limited. Over the past three years, the Foundation has awarded more than \$11 million for the renovation, expansion, and operational support of FQHC facilities, allowing them to serve a greater number of patients.

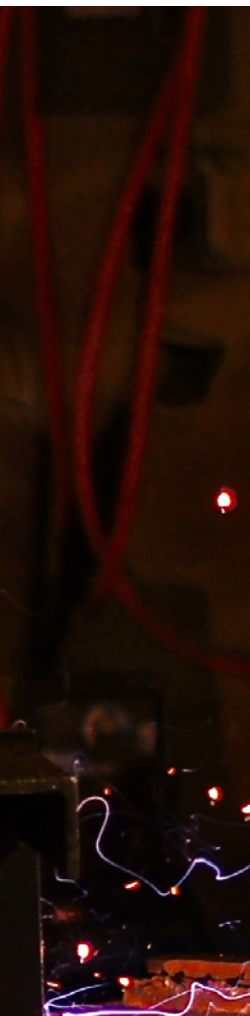


# Jobs

Employment provides the best opportunity for personal success and financial security. Quality training programs that lead to employment enable individuals and families to achieve economic stability.







## Areas of Funding

1. **Job Training:** The Foundation supports job-training programs that result in industry-recognized credentials, as well as job-placement and retention services. Employers must engage with the training organizations to verify program content and support placement and retention services. Organizations should track job retention and wages for at least one year, preferably two.
2. **Financial Literacy and Economic Stability:** The Foundation supports programs that provide people with the financial tools necessary to achieve economic stability.
3. **Youth Employment and Career Support:** The Foundation supports programs that provide high school-based career exploration and work-based learning opportunities for youth, generally ranging between 14 and 24.

## Key Initiatives

### National Fund for Workforce Solutions

The National Fund for Workforce Solutions (National Fund) continues to support and advance the Foundation's goals within the grants focus area of Jobs. The National Fund's more than 30 regional collaboratives bring together partners, helping workers to succeed and providing employers with the talent needed to compete. The Foundation has committed \$1.25 million through 2022 to support additional response to COVID-19, as well as the development of two new collaboratives in Hawai'i and Northeastern Pennsylvania (see pages 9 and 12) that will serve as models for future urban and rural partnerships.

### Wage Record Study for Maryland Grantees

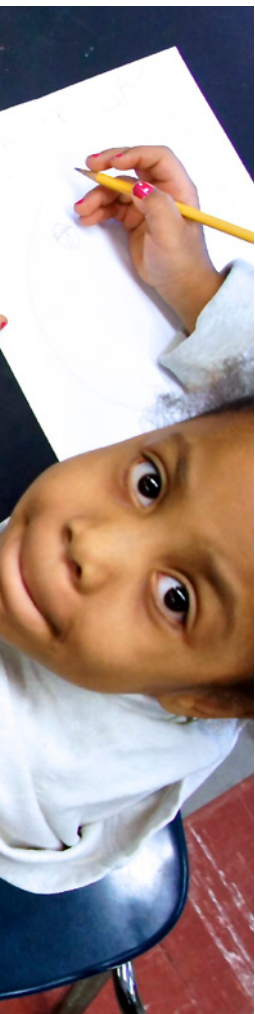
The Weinberg Foundation, in partnership with the Abell Foundation and Annie E. Casey Foundation, is supporting a Wage Record Study through the Baltimore Workforce Funders Collaborative (BWFC). The BWFC contracted with the Jacob France Institute to analyze pre- and post-training earnings for participants of Maryland's workforce development programs, in order to better understand the long-term impact of workforce interventions.



# Education

Education can help break the cycle of poverty. Providing at-risk children and youth with academic opportunities helps prepare them for a stable and productive future. The Foundation is dedicated to supporting organizations that provide or supplement a high-quality education from kindergarten through high school.





## Areas of Funding

1. **STEM (Science, Technology, Engineering, and Math):** The Foundation supports in-school and out-of-school STEM programs and programs proven to improve math proficiency, in order to prepare youth for evolving workforce needs that require STEM literacy.
2. **Out-of-School Time:** The Foundation supports after-school, weekend, and summer programs for students, kindergarten through grade 12. Funded programs must have an academic component with demonstrated academic outcomes.
3. **College and Career Preparedness:** The Foundation supports programs that assist students in developing a post-secondary plan and position them for success after graduation from high school.

## Key Initiatives

### Baltimore Elementary and Middle School Library Project



The Foundation has committed \$15 million to this multi-year, collaborative effort involving more than 30 community and government partners. The Library Project builds or transforms Baltimore City Public School libraries in neighborhoods where many students face academic and economic challenges. By 2024, the Library Project will serve nearly 9,000 students, as well as their families, through 19 new libraries (17 completed to date) and will have leveraged more than \$30 million in additional federal, state, and local funds.

### Baltimore Summer Funding Collaborative



This more than \$3 million annual partnership, which has grown to include nearly a dozen funders each year, has distributed more than \$22 million in grants over the last six years, including nearly \$8 million from the Weinberg Foundation. The SFC supports high-quality summer programs for children and youth. Programs address one or more of the following areas: literacy; STEM (Science, Technology, Engineering, and Math); youth employment; college and career readiness; environmental education; health and overcoming stress and trauma; and enrichment, including sports and arts programming.





# Community Services

The Weinberg Foundation helps to build stronger communities through strategic partnerships.





## Areas of Funding

The Foundation recognizes that certain service providers operate multiple programs that meet a range of basic human needs and span many of the Foundation's funding priorities. Organizations that provide services bridging the areas of Housing, Health, Jobs, and Education may be eligible for a Community Services grant.

The Foundation is also engaged in select initiatives addressing Jewish poverty on a national scale, as well as strengthening the leadership of organizations that serve the Jewish community.

## Key Initiatives

### Mobility LABs (Learning and Action Bets)



This \$25 million initiative is a strategic collaboration among national and regional philanthropic partners, including Robin Hood, The Harry and Jeanette Weinberg Foundation, Tipping Point Community, and the Bill & Melinda Gates Foundation. Over four years, Mobility LABs will spur the development of new solutions to sustainably lift families out of poverty in diverse urban, suburban, and rural communities and promote dynamic leaders who will aim to change the national conversation around social and economic mobility.

### Baltimore's Promise

Baltimore's **PROMISE**

The Foundation has granted more than \$7 million to support this collaborative initiative dedicated to improving children's health and education outcomes in Baltimore, from birth through college and/or career.

---

It is not upon you to finish the work,  
but neither are you free to desist from it.

לא עליך המלאכה לגמור, ולא אתה בן חורין להבטל ממנה.

Pirkei Avot 2:16

