



The Harry and Jeanette Weinberg Foundation



# SMALL GRANTS PROGRAM

2016 • Volume 16

# OVERVIEW

The Weinberg Foundation provides approximately \$100 million in annual grants to nonprofits that provide direct services to low-income and vulnerable individuals and families, primarily in the US and Israel. Grants are focused on meeting basic needs and enhancing an individual's ability to achieve self-sufficiency with emphasis on older adults, the Jewish community, and the Weinberg Foundation's priority communities of Maryland, Northeastern Pennsylvania, Hawaii, Greater Chicago, Israel, and the Former Soviet Union.

In the following pages, the Foundation has identified all small grants that were approved during the past three years. During that time, the Foundation approved 90 grants totaling \$4.6 million. Of the total funds approved, \$3.9 million has been paid to date.

OVER THE PAST THREE YEARS,  
THE WEINBERG FOUNDATION HAS

---

APPROVED  
**90  
SMALL  
GRANTS**

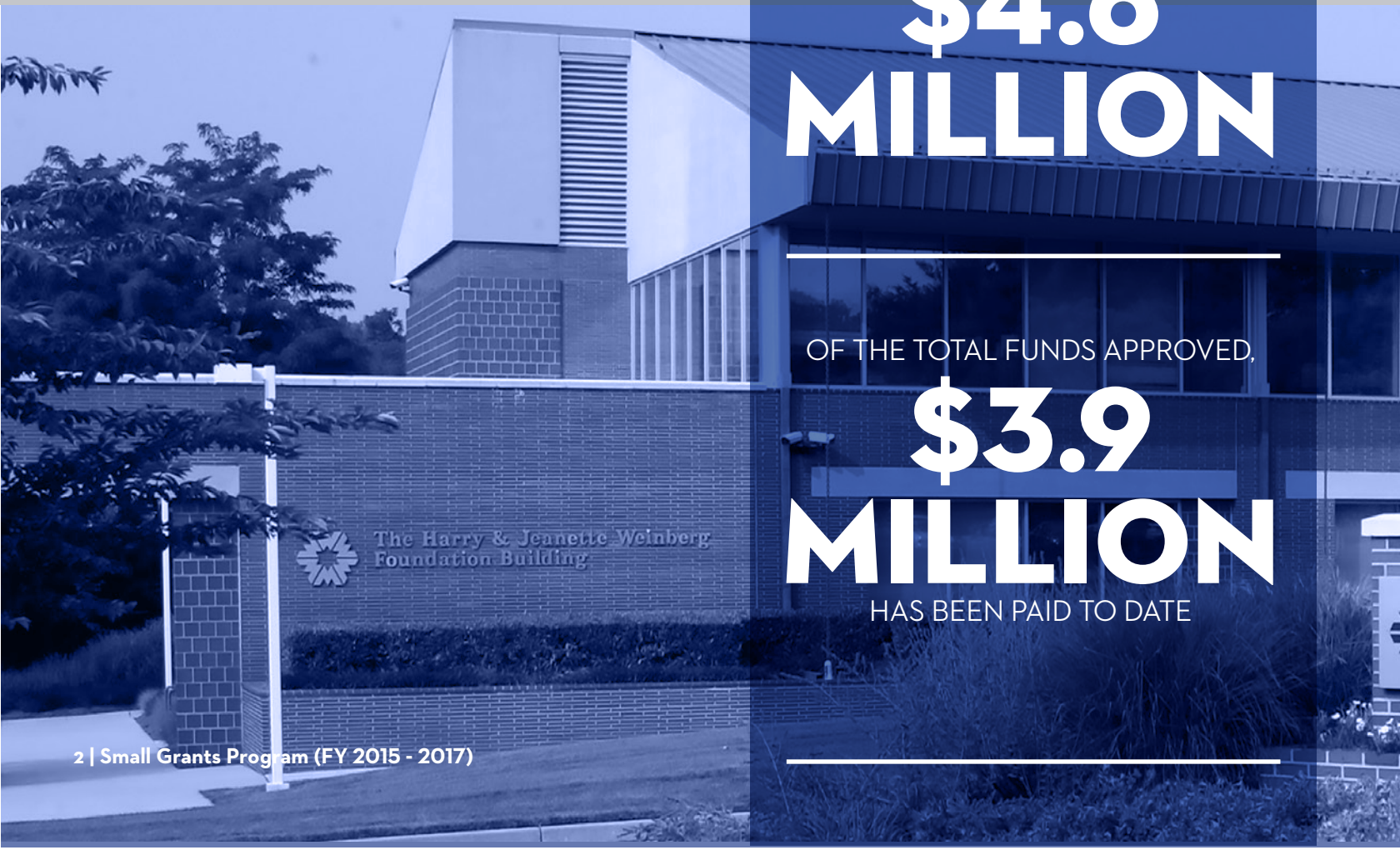
---

TOTALING  
**\$4.6  
MILLION**

---

OF THE TOTAL FUNDS APPROVED,  
**\$3.9  
MILLION**  
HAS BEEN PAID TO DATE

---



Since its inception in 2007, the Foundation’s Small Grants Program has awarded more than 500 grants, totaling nearly \$25 million, to nonprofits in Maryland and Northeastern Pennsylvania.

The Small Grants Program (SGP) allows smaller nonprofits to apply for a grant of up to \$50,000 for two years (\$100,000 total). Unlike the Foundation’s standard grantmaking process, there is no deadline for grant requests and a Letter of Inquiry (LOI) is not required.

To participate in the Small Grants Program, an applicant must meet several requirements including

- Be a nonprofit organization with 501(c)(3), tax-exempt status; have operated for a minimum of three years; and have audited or reviewed financial statements.
- Maintain an annual organizational budget of \$1 million or less within the State of Maryland or within Northeastern Pennsylvania.
- Meet the Foundation’s mission of providing direct services to low-income and vulnerable populations in Maryland and Pennsylvania.

The Foundation does not fund

- Individuals
- Arts and culture
- Post-secondary scholarships
- Debt reduction
- Colleges and universities
- Think tanks
- Endowments
- Political action groups
- Annual appeals (in most cases)
- Publications
- Academic or health research
- Fundraising events

For grants serving Maryland, please contact



**Rachel Duden**  
Program Associate, US Education and SGP  
410-654-8500, ext. 229  
rduden@hjweinberg.org

For grants serving Northeastern Pennsylvania, please contact



**Kate Sorestad**  
Program Officer, Libraries, Northeastern Pennsylvania, and Veterans Grants  
410-654-8500, ext. 249  
ksorestad@hjweinberg.org

**\$24,915,160**

Total of all grants approved since inception of Small Grants Program

**\$196,738,189**

Total of all Foundation grants distributed in Fiscal Years 2015-2017 (to date)

**\$2,009,866,487**

Total of all Foundation grants distributed since 1980



HARRY AND JEANNETTE  
WEINBERG FOUNDATION



**LIST OF SELECTED APPROVED AND PAID GRANTS FY 2015 - 2017**

ORGANIZATION NAME	FISCAL YEAR APPROVED	AMOUNT APPROVED	AMOUNT PAID TO DATE
<b>OLDER ADULTS</b>			
<b>Baltimore Bar Foundation</b> <i>Baltimore, MD</i> to support the Legal Services to the Elderly program that provides free legal counseling and representation to individuals age 60 and over	2017	\$35,000	\$35,000
	2015	\$25,000	\$25,000
<b>Chesapeake Housing Mission</b> <i>Salisbury, MD</i> to support the general operations of this organization that provides home repair services, including wheelchair ramps, grab bars, and stair railings for older adults and individuals with disabilities	2016	\$32,000	\$32,000
<b>Partners In Care</b> <i>Pasadena, MD</i> to support the conversion of this organization's current database into a web-based platform with software known as "Time and Talents"	2015	\$30,000	\$30,000
<b>St. Mary's Outreach Center</b> <i>Baltimore, MD</i> to support the general operations of this organization that strives to help vulnerable older adults in and around the Hampden community remain independent	2017	\$25,000	\$0
to support this organization that connects older adults with a range of services, including SNAP (Supplemental Nutrition Assistance Program), Medicare, Medicaid, and the Maryland Energy Discount	2017	\$25,000	\$0
	2016	\$20,000	\$20,000
<b>WORKFORCE DEVELOPMENT</b>			
<b>The Caroline Friess Center</b> <i>Baltimore, MD</i> to support the general operations of this organization that provides healthcare-related employment training for women	2015	\$50,000	\$50,000
<b>Consumer Credit Counseling Service Of Northeastern Pennsylvania</b> <i>Pittston, PA</i> to support financial literacy programs for youth, families, older adults, and first-time homebuyers	2015	\$60,000	\$60,000
<b>Housing Opportunities Community Partners</b> <i>Kensington, MD</i> to support this organization's Driving Towards Success program that purchases refurbished vehicles for working families	2015	\$50,000	\$50,000
<b>Skills In Scranton Business Education Partnership</b> <i>Scranton, PA</i> to support this organization that helps students access employment opportunities in major healthcare institutions	2015	\$75,000	\$75,000
<b>Training Source</b> <i>Prince George's County, MD</i> to support the general operations of this organization that works to ensure adults and youth have the job and life skills necessary to secure and retain employment	2016	\$100,000	\$50,000
<b>EDUCATION</b>			
<b>Baltimore Child Abuse Center</b> <i>Baltimore, MD</i> to support the general operations of this organization that provides comprehensive forensic interviews, medical treatment, and mental health treatment for children coping with sexual abuse, trauma, and other adverse childhood experiences	2017	\$50,000	\$0

ORGANIZATION NAME	FISCAL YEAR APPROVED	AMOUNT APPROVED	AMOUNT PAID TO DATE
<b>EDUCATION (CONTINUED)</b>			
<b>Baltimore Curriculum Project</b> <i>Baltimore, MD</i> to support Wolfe Street Academy's after-school program that provides academic tutoring, STEM (Science, Technology, Engineering, Math) programming, and enrichment activities for elementary school students	2017	\$50,000	\$50,000
	2015	\$100,000	\$100,000
<b>Baltimore SquashWise</b> <i>Baltimore, MD</i> to support this organization's out-of-school time program that offers academic and athletic assistance for middle and high school students	2015	\$80,000	\$80,000
<b>Boys and Girls Clubs of Harford County</b> <i>Harford County, MD</i> to support i3STEM, a program that uses technology-based activities, including computer programming and mechanical engineering, to help students engage in the processes of scientific inquiry, creative thinking, problem solving, and project management	2017	\$20,000	\$20,000
<b>Boys &amp; Girls Clubs of Northeastern Pennsylvania</b> <i>Scranton, PA</i> to support the purchase of a new heating and air conditioning system	2015	\$50,000	\$50,000
<b>Building Science Technology and Education Partnerships (Building STEPS)</b> <i>Baltimore, MD</i> to support the general operations of this organization that provides high school students with the tools needed to enroll in and graduate from college through STEM-focused (Science, Technology, Engineering, Math) seminars, paid summer internships, college access workshops, and alumni services	2016	\$30,000	\$30,000
	2015	\$20,000	\$20,000
<b>Cambridge-South Dorchester High School</b> <i>Cambridge, MD</i> to support this organization's three-year college access program that provides students with mentors, leadership through service, and pathways to college	2016	\$12,500	\$12,500
<b>Code In The Schools</b> <i>Baltimore, MD</i> to support the general operations of this organization that provides out-of-school time, computer science education for youth and professional development for teachers and librarians	2017	\$35,000	\$35,000
<b>College Tracks</b> <i>Bethesda, MD</i> to support programming that provides first-generation-to-college students with the support needed to gain access to financial aid and a college education	2015	\$100,000	\$100,000
<b>Community Justice Project</b> <i>Hazleton, PA</i> to support the Hispanic Outreach Project that provides representation and outreach for Spanish-speaking workers	2016	\$50,000	\$50,000
<b>Court Appointed Special Advocate (CASA) - Baltimore County</b> <i>Towson, MD</i> to support this organization that works to place abused and neglected children in safe, permanent homes	2015	\$50,000	\$50,000
<b>Court Appointed Special Advocate (CASA) - Prince George's County</b> <i>Prince George's County, MD</i> to support the general operations of this organization that addresses the employment, housing, health, and social needs of youth who are aging out of the foster care system	2016	\$60,000	\$30,000

**LIST OF SELECTED APPROVED AND PAID GRANTS FY 2015 - 2017**

ORGANIZATION NAME	FISCAL YEAR APPROVED	AMOUNT APPROVED	AMOUNT PAID TO DATE
<b>EDUCATION (CONTINUED)</b>			
<b>Critchlow Adkins Children's Centers</b> <i>Easton, MD</i> to support this organization's tuition subsidy program to ensure that families can access affordable childcare	2015	\$40,000	\$40,000
<b>Digital Harbor Foundation</b> <i>Baltimore, MD</i> to support this organization's core after-school program, Maker Foundations, that provides hands-on technology experience for middle and high school youth	2015	\$100,000	\$100,000
<b>Family Crisis Center of Baltimore County</b> <i>Baltimore, MD</i> to support the general operations of this organization that provides comprehensive services for individuals experiencing family conflict and family violence	2017	\$25,000	\$0
<b>Family Crisis Resource Center</b> <i>Cumberland, MD</i> to support the general operations of this organization that provides shelter, counseling, and legal services for adults and children who are escaping intimate partner violence or recovering from trauma, including rape, sexual assault, sexual abuse, child abuse, and stalking	2017	\$30,000	\$15,000
<b>First Generation College Bound</b> <i>Prince George's County, MD</i> to support the College Access Program, which provides guidance and preparation for high school students who are navigating the college admissions process	2017	\$60,000	\$30,000
<b>Girls, Inc. of Washington County</b> <i>Hagerstown, MD</i> to support the general operations of this organization that provides after-school and summer programs with the goal of empowering girls to be self-sufficient, responsible, and confident, and to serve an additional 50 girls, ages 6 to 13	2017	\$25,000	\$25,000
<b>Heroes Helping Heroes</b> <i>Baltimore, MD</i> to support the general operations of this organization that provides a hands-on, after-school development program, including academic, community service, and athletic components for students ages 5 to 18	2017	\$20,000	\$20,000
<b>Hope Works of Howard County</b> <i>Howard County, MD</i> to support the general operations of this organization that provides residential, legal, and counseling services for survivors of domestic violence and sexual assault	2016	\$40,000	\$20,000
<b>Horizons of Kent and Queen Anne's County</b> <i>Kent and Queen Anne's Counties, MD</i> to support the general operations of this organization's summer program that provides reading and math classes, STEM (Science, Technology, Engineering, Math) curriculum, health lessons, enrichment, and other activities for elementary and middle school students	2017	\$50,000	\$25,000
<b>Ingenuity Project</b> <i>Baltimore, MD</i> to support the out-of-school time component of the accelerated mathematics and science program serving students at Mount Royal Middle School	2016	\$50,000	\$50,000
<b>Intersection</b> <i>Baltimore, MD</i> to support this organization that provides college and career-readiness services for high school students	2015	\$50,000	\$50,000
<b>It Takes A Village To Help Our Children</b> <i>Crisfield, MD</i> to support the general operations of this organization that provides after-school and summer programs for youth	2015	\$25,000	\$25,000

ORGANIZATION NAME	FISCAL YEAR APPROVED	AMOUNT APPROVED	AMOUNT PAID TO DATE
<b>EDUCATION (CONTINUED)</b>			
<b>Kids in Need of Defense</b> <i>Washington, DC</i> to support the recruitment and training of volunteer attorneys who will provide pro bono legal representation to unaccompanied children who enter the United States Immigration system alone, ensuring that no child appears in court without representation	2015	\$50,000	\$50,000
<b>Lasos</b> <i>Bel Air, MD</i> to support this organization's out-of-school time youth mentoring and family literacy programs for youth and their families	2015	\$25,000	\$25,000
<b>Let's Go Boys &amp; Girls</b> <i>Baltimore, MD</i> to support the general operations of this organization that provides in-school and out-of-school STEM (Science, Technology, Engineering, Math) programs for students, kindergarten to eighth grade	2016	\$70,000	\$35,000
<b>Maryland Science Olympiad</b> <i>Frederick, MD</i> to support the general operations of this organization that provides students with the opportunity to participate in after-school STEM (Science, Technology, Engineering, Math) programs and regional STEM competitions	2015	\$70,000	\$70,000
<b>McGlynn Learning Center</b> <i>Wilkes-Barre, PA</i> to support the general operations of this organization that provides after-school and summer programming for children living in housing provided by the Wilkes-Barre Housing Authority	2015	\$60,000	\$60,000
<b>MERIT (Medical Education Resources Initiative for Teens)</b> <i>Baltimore, MD</i> to support the general operations of this organization that works to recruit and train disadvantaged student "scholars" for college and careers in the healthcare sector	2016	\$25,000	\$25,000
<b>Mid-Shore Council On Family Violence</b> <i>Caroline, Dorchester, Kent, Queen Anne's, and Talbot Counties, MD</i> to support the general operations of this organization that provides intervention and prevention services for those escaping domestic violence through shelter, counseling, legal services, and advocacy	2017	\$50,000	\$50,000
<b>Sexual Assault/Spouse Abuse Resource Center (SARC)</b> <i>Harford County, MD</i> to support the general operations of this organization that provides counseling, legal, shelter, and outreach services for those escaping domestic violence, sexual assault, and stalking	2016	\$50,000	\$25,000
<b>TurnAround</b> <i>Towson, MD</i> to support the general operations of this organization that provides counseling, residential, and legal services for survivors of domestic violence, incest, rape, and sexual assault	2016	\$50,000	\$25,000
<b>Victims Resource Center</b> <i>Wilkes-Barre, PA</i> to support this organization that works to increase efficiency, utilize personnel more effectively, and build capacity for fundraising and grant writing	2015	\$50,000	\$50,000
<b>Village Learning Place</b> <i>Baltimore, MD</i> to support Let's Invest in Neighborhood Kids (LINK), an after-school program that provides academic instruction and enrichment activities for students, pre-kindergarten and up who are performing below grade level	2017	\$30,000	\$15,000

**LIST OF SELECTED APPROVED AND PAID GRANTS FY 2015 - 2017**

ORGANIZATION NAME	FISCAL YEAR APPROVED	AMOUNT APPROVED	AMOUNT PAID TO DATE
<b>EDUCATION (CONTINUED)</b>			
<b>Wayne-Pike Adult Literacy Program</b> <i>Honesdale, PA</i> to support the general operations of this organization that provides educational programs for adults who face barriers to their educational goals	2017	\$30,000	\$15,000
<b>Wide Angle Youth Media</b> <i>Baltimore, MD</i> to support after-school programming for middle school students, including academics, life skills, and media training	2015	\$50,000	\$50,000
<b>Young Audiences of Maryland</b> <i>Baltimore, MD</i> to support this organization's partnership with The Wolf Trap Institute for Early Learning through the Arts that works to bring arts-based learning to early childhood classrooms	2015	\$25,000	\$25,000
<b>GENERAL COMMUNITY SUPPORT</b>			
<b>NeighborWorks</b> <i>Scranton, PA</i> to support the general operations of this organization that works to strengthen the financial stability of families by promoting home ownership and providing affordable housing services	2016	\$100,000	\$50,000
<b>Sixth Branch</b> <i>Baltimore, MD</i> to support the general operations of this organization that utilizes the leadership and organizational skills of military veterans and community volunteers to execute neighborhood revitalization projects in the Darley Park, Johnston Square, and Oliver neighborhoods	2016	\$25,000	\$25,000
<b>South Baltimore Learning Corporation</b> <i>Baltimore, MD</i> to support this organization's Adult Basic Education classes, GED achievement, and National External Diploma programs	2016	\$25,000	\$25,000
<b>DISABILITIES</b>			
<b>Abington Area Joint Recreation Board</b> <i>Clarks Summit, PA</i> to support the construction of a disabilities-accessible walking path and fishing structure and shelter, as well as the expansion of a parking lot to improve access for those with disabilities	2015	\$50,000	\$50,000
<b>Lackawanna Heritage Valley Authority</b> <i>Scranton, PA</i> to support the construction of a natural play area, which will comply with the Americans with Disabilities Act, at the Green Ridge Trailhead of the Lackawanna River Heritage Trail	2016	\$50,000	\$50,000
<b>The Pro Bono Counseling Project</b> <i>Throughout Maryland</i> to support the general operations of this organization that provides free mental health services for underinsured or uninsured residents who are ineligible for Medicaid	2017	\$40,000	\$40,000
<b>BASIC HUMAN NEEDS &amp; HEALTH</b>			
<b>AHC Greater Baltimore</b> <i>Baltimore, MD</i> to support an asset-building program that works to move residents in affordable housing complexes from financial crisis into financial stability	2017	\$60,000	\$30,000
<b>Allegany Health Right</b> <i>Allegany County, MD</i> to support the general operations of this organization that works to improve the health status and quality of life for uninsured adults	2016	\$50,000	\$25,000

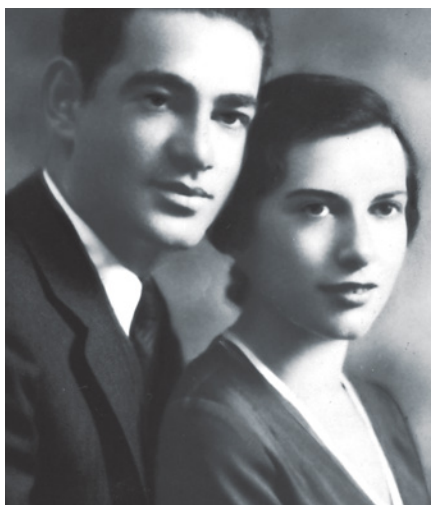


ORGANIZATION NAME	FISCAL YEAR APPROVED	AMOUNT APPROVED	AMOUNT PAID TO DATE
<b>BASIC HUMAN NEEDS &amp; HEALTH (CONTINUED)</b>			
<b>At Jacob's Well</b> <i>Baltimore, MD</i> to support the general operations of this organization that provides transitional housing and case management services for individuals suffering from mental illness	2015	\$25,000	\$25,000
<b>Bikur Cholim of Baltimore</b> <i>Baltimore, MD</i> to support the general operations of this organization that provides food, transportation, and other personal and medical support services for patients who are in medical crisis and their families	2017	\$50,000	\$25,000
<b>Bridges To Housing Stability</b> <i>Columbia, MD</i> to support the general operations of this organization that works to prevent homelessness by moving families into stable housing	2017	\$50,000	\$25,000
<b>Child Center and Adult Services</b> <i>Gaithersburg, MD</i> to support the Healthy Mothers, Healthy Babies program that provides free, home-based mental health therapy for uninsured pregnant women and new mothers suffering from pre-natal and post-partum depression	2015	\$50,000	\$50,000
<b>The Community Intervention Center of Lackawanna County</b> <i>Scranton, PA</i> to support the general operations of this organization that provides, at no cost, behavioral health interventions, social rehabilitation, and homeless day shelter services for individuals	2016	\$100,000	\$50,000
<b>DRU/Mondawmin Healthy Families</b> <i>Baltimore, MD</i> to support this organization's home visiting programs that promote the health, safety, and school readiness of children and enhance the self-sufficiency of families	2015	\$35,000	\$35,000
<b>Episcopal Housing Corporation</b> <i>Baltimore, MD</i> to support the Neighbor-to-Neighbor program that assists families facing eviction and homelessness	2016	\$60,000	\$60,000
<b>Episcopal Refugees &amp; Immigrant Center Alliance Cathedral of the Incarnation</b> <i>Pikesville, MD</i> to support the renovation of the Gilead House, the rectory of St. Mark's on the Hill, which provides housing for individuals seeking asylum	2016	\$29,000	\$29,000
<b>Faith Communities and Civic Agencies United</b> <i>Belcamp, MD</i> to support the general operations of this organization that provides safe, emergency shelter and permanent supportive housing programs for homeless individuals	2016	\$40,000	\$40,000
<b>Family Promise of Carbon County</b> <i>Lehighton, PA</i> to support the general operations of this organization that provides temporary shelter, meals, and fellowship for families without permanent housing	2015	\$20,000	\$20,000
<b>The Family Tree</b> <i>Baltimore, MD</i> to support the Positive Parenting program that provides stress and anger management, child development, problem solving, and family-life services for parents and caregivers	2015	\$100,000	\$100,000
<b>Franciscan Center</b> <i>Baltimore, MD</i> to support the general operations of this organization that provides basic and emergency services for individuals who are homeless or at risk of being homeless	2015	\$70,000	\$70,000

**LIST OF SELECTED APPROVED AND PAID GRANTS FY 2015 - 2017**

ORGANIZATION NAME	FISCAL YEAR APPROVED	AMOUNT APPROVED	AMOUNT PAID TO DATE
<b>BASIC HUMAN NEEDS &amp; HEALTH (CONTINUED)</b>			
<b>FreeState Legal Project</b> <i>Baltimore, MD</i> to support the general operations of this organization that provides free legal services for the LGBT population	2015	\$100,000	\$100,000
<b>Harford Family House</b> <i>Aberdeen, MD</i> to support the general operations of this organization that helps homeless families transition into permanent housing	2016	\$70,000	\$70,000
<b>Health Partners</b> <i>Waldorf, MD</i> to support the general operations of this organization that provides primary care and dental services for uninsured and underinsured individuals and families	2015	\$50,000	\$50,000
<b>Hope Forward</b> <i>Baltimore, MD</i> to support the Emergency and Transitional Housing program that will provide housing to former foster youth who are homeless or at risk of being homeless	2015	\$100,000	\$100,000
<b>Intersection of Change</b> <i>Baltimore, MD</i> to support Martha's Place, a program that provides transitional and permanent housing opportunities for women in recovery from substance abuse	2015	\$25,000	\$25,000
<b>Jesuit Volunteer Corps</b> <i>Baltimore, MD</i> to support 11 Jesuit volunteers who will provide community service at 10 nonprofit organizations	2015	\$100,000	\$100,000
<b>JHP (Jobs Have Priority)</b> <i>Prince George's County, MD</i> to support the general operations of this organization that helps individuals who are homeless or at risk of becoming homeless find, obtain, and retain employment and stable housing	2016	\$25,000	\$25,000
<b>Laurel Advocacy and Referral Services</b> <i>Anne Arundel, Howard, and Prince George's Counties, MD</i> to support the implementation of a new electronic client database for this organization that enables individuals who are in crisis to achieve stability and long-term self-sufficiency	2017	\$10,000	\$0
<b>Mid-Shore Council On Family Violence</b> <i>Easton, MD</i> to support this organization that provides assistance for rural victims of domestic violence	2015	\$100,000	\$100,000
<b>Mid-Shore Pro Bono</b> <i>Caroline, Dorchester, Kent, Queen Anne's, and Talbot Counties, MD</i> to support the general operations of this organization that provides access to free or reduced-fee legal services for qualified individuals	2017	\$50,000	\$25,000
<b>NEPA Community Health Care</b> <i>Susquehanna, PA</i> to support this organization's Federally Qualified Health Center (FQHC) that will provide full primary healthcare for individuals and families	2015	\$100,000	\$100,000
<b>Sasha Bruce Youthwork</b> <i>Capitol Heights, MD</i> to support Promise Place, a program that provides emergency shelter for homeless, abused, neglected, and runaway youth	2015	\$50,000	\$50,000
<b>Schuylkill Women In Crisis</b> <i>Pottsville, PA</i> to support this organization's emergency shelter that provides counseling and case management services for those escaping domestic and sexual violence	2016	\$70,000	\$70,000

ORGANIZATION NAME	FISCAL YEAR APPROVED	AMOUNT APPROVED	AMOUNT PAID TO DATE
<b>BASIC HUMAN NEEDS &amp; HEALTH (CONTINUED)</b>			
<b>Stepping Stones Shelter</b> <i>Rockville, MD</i> to support the general operations of this organization that provides shelter, food, and supportive services for homeless families	2015	\$30,000	\$30,000
<b>Sullivan County Action</b> <i>Laporte, PA</i> to support this organization that provides dental health services for individuals and families	2015	\$60,000	\$60,000
<b>Treatment Court Advocacy Center Of Lackawanna County</b> <i>Clarks Summit, PA</i> to support the general operations of this organization that promotes awareness of Lackawanna County's Treatment Courts and community collaboration	2015	\$60,000	\$60,000
<b>Women's Resource Center</b> <i>Scranton, PA</i> to support this organization's transitional housing program that provides up to 24 months of transitional housing for individuals who are homeless and fleeing abusive relationships	2016	\$100,000	\$100,000
<b>YWCA of the Greater Baltimore Area</b> <i>Baltimore, MD</i> to support a permanent supportive housing program that provides subsidized housing and case management services for formerly homeless women	2015	\$40,000	\$40,000



“WHILE THEY ARE FINDING  
THE CURES FOR ALL THE ILLS OF  
THE WORLD, SOMEONE WILL  
BE HUNGRY, SOMEONE WILL  
BE COLD. THAT’S OUR JOB.”

– HARRY WEINBERG



**The Harry and Jeanette Weinberg Foundation**

7 Park Center Court, Owings Mills, Maryland 21117  
Phone: 410-654-8500 Fax: 410-654-4900  
[www.hjweinbergfoundation.org](http://www.hjweinbergfoundation.org)