



*Improving the well-being of the poor and vulnerable  
in our hometowns and around the world*

## *Hello from Baltimore!*

The Harry and Jeanette Weinberg Foundation is committed to keeping in touch with the community. Grants overviews like this one are a vital part of the communications process by highlighting selected grants specific to Foundation program areas and communities. All of the grants reflect the Foundation's mission of meeting basic needs and enhancing an individual's ability to meet those needs. Within that context, emphasis is placed on older adults and the Jewish community.

Workforce Development is one of two program areas which fund direct service providers nationwide and in Israel. The Weinberg Foundation seeks programs which provide the "life-tools" for clients to lift themselves from poverty into solid self-support, preferably on a career track. Grantmaking within Workforce Development is focused around three primary goals:

- **Job-Readiness** – grants to service providers to support training that results in job-placement and job-retention in partnership with employers.
- **Financial Literacy** – grants to support the goal of increased financial management and assets for an individual or family.
- **Adult Entrepreneurship** – grants that may include microloan or free loan programs to assist the working poor to start a small business.

The Foundation has approved many grants nationally and globally to programs that offer soft and hard-skill training, job coaching, job placement, and career advancement opportunities in various fields so participants are able to succeed with motivation and hard work. The Foundation also supports programs that increase the job training and employment of ex-offenders.

In the following pages, the Foundation has identified selected grants of \$50,000 or more that were approved or distributed during the past three fiscal years. During that time, the Foundation approved **\$9.8 million** in new grants for Workforce Development. In addition, the Foundation paid more than **\$26 million** in *previously* approved grants for a total of nearly **\$36 million**. This is a significant investment in the employment security of countless individuals as well as those who will hire them.

### **Here are just a few highlights of significant Weinberg Foundation grants promoting Workforce Development:**

- More than **\$5 million** over the past three years to **TEVET** for its **Employment Initiative** throughout Israel. The program supports organizations that seek to remove social barriers to employment and increase marketable skills among Israel's most vulnerable communities including new immigrants, people with disabilities, Israeli Arabs, and more.



- More than **\$5 million** to support the **National Fund for Workforce Solutions (NFWS)** which involves more than 430 investors, 3,000 employers, 30,000 individuals served, and \$160 million in local funding to support a skilled workforce. NFWS and its partners are transforming how low-wage workers acquire the skills needed for good careers.
- **\$3.5 million** to support Center for Urban Families in Baltimore, Maryland. Center for Urban Families reaches some of Baltimore's most disconnected and underserved residents, providing an integrated approach to connecting men and women to career paths and strong family models.
- **\$1.7 million** to the **Sheppard and Enoch Pratt Foundation, Inc.** to support the implementation of a workforce development initiative throughout Maryland. Specifically, the program aims to enhance the quality and effectiveness of supported employment services for persons with mental illness.

The Harry and Jeanette Weinberg Foundation is privileged to partner with a wide array of direct services providers, as well as governmental and philanthropic agencies, to provide those in the greatest need with the life tools to help themselves by obtaining and keeping employment. That collaborative effort is reflected in this summary report which the Foundation invites you to review. If you have any questions or comments, please feel free to contact the Foundation.

Sincerely,

Rachel Garbow Monroe  
President

Donn Weinberg  
Chairman

Marci Hunn  
Program Director



**The Harry and Jeanette Weinberg Foundation, Inc.**

7 Park Center Court, Owings Mills, Maryland 21117

Phone: 410-654-8500 Fax: 410-654-4900

[www.hjweinbergfoundation.org](http://www.hjweinbergfoundation.org)



The Harry and Jeanette Weinberg Foundation, Inc.

*Workforce Development is the second largest area of grantmaking at the Weinberg Foundation. The Weinberg Foundation is committed to helping people to help themselves by obtaining and keeping employment, preferably on a career track. The Foundation funds programs which equip people with the life-tools to lift themselves from poverty into solid self-support.*

The Harry and Jeanette Weinberg Foundation is one of the largest private charitable foundations in the United States, funding nonprofits that provide direct services to poor and vulnerable people, primarily in the U.S. and Israel.

Foundation grants are allocated through several program areas and are focused on meeting basic needs such as shelter, nutrition, health, socialization, and on enhancing an individual's ability to meet those needs. Older Adults and Workforce Development are national programs while Basic Human Needs & Health; Disabilities; Education, Children, Youth & Families; and General Community Support fund direct service providers in the Foundation's "hometown" communities of metropolitan Baltimore, northeastern Pennsylvania, Hawaii, and Israel. The Maryland Small Grants Program (MSGP) includes all Foundation grantmaking areas.

In the past three fiscal years, The Harry and Jeanette Weinberg Foundation approved or paid grants totaling nearly \$36 million to organizations promoting workforce development. During that time, the Foundation approved \$9.8 million in new grants for Workforce Development. In addition, the Foundation paid more than \$26 million in previously approved grants.

ORGANIZATION NAME	FISCAL YEAR APPROVED	GRANT AMOUNT	TYPE OF GRANT	PAYMENT AMT FOR FYE 10	PAYMENT AMT FOR FYE 11	PAYMENT AMT FOR FYE 12
<b>American Friends of Nishmat</b> JERUSALEM, ISRAEL to support a program that prepares young Ethiopian-Israeli women for entrance into institutions of higher education and assistance upon completion	2012	\$200,000	P	\$0	\$0	\$100,000
	2010	\$60,000	P	\$0	\$60,000	\$0
<b>The American Jewish Joint Distribution Committee, Inc. (TEVET)</b> THROUGHOUT ISRAEL to provide program support to organizations that remove social barriers to employment and raise the level of marketable skills among Israel's most vulnerable communities: new immigrants, the ultra-Orthodox, the disabled, young adults, and Israeli Arabs	2012	\$3,000,000	O	\$0	\$0	\$3,000,000
	2011	\$1,750,000	O	\$0	\$1,750,000	\$0
	2010	\$500,000	O	\$500,000	\$0	\$0
	2006	\$6,000,000	O	\$1,500,000	\$0	\$0
<b>Baltimore Alliance for Careers in Healthcare, Inc.</b> BALTIMORE, MARYLAND to support an organization focused on eliminating the critical shortage of qualified healthcare workers by working with healthcare institutions and other organizations to prepare residents for skilled positions as part of a career pathway to economic independence	2012	\$150,000	O	\$0	\$0	\$75,000
	2009	\$325,000	O	\$100,000	\$75,000	\$0
<b>Bonnie CLAC (Car Loans and Counseling)</b> WEST LEBANON, NEW HAMPSHIRE (Now known as More Than Wheels) to support the national expansion of Bonnie CLAC's model of assisting low-income individuals to become financially literate, rebuild their credit, and purchase new, fuel-efficient vehicles	2009	\$200,000	O	\$100,000	\$0	\$0
<b>The Cara Program</b> CHICAGO, ILLINOIS to support the purchase and renovation of a training center that provides homeless and at-risk adults with the skills, confidence, and resources they need to secure and sustain quality employment to provide general operating support for a program that assists motivated individuals affected by homelessness and poverty by providing comprehensive training, permanent job placement, and critical support services	2011	\$500,000	C	\$0	\$0	\$0
	2010	\$200,000	O	\$0	\$200,000	\$0
<b>CASA de Maryland, Inc.</b> THROUGHOUT MARYLAND to support CASA's workforce development program serving low-income immigrants residing in Baltimore City, Montgomery County, and Prince George's County	2012	\$100,000	O	\$0	\$0	\$50,000
	2011	\$100,000	P	\$0	\$100,000	\$0
to support renovations of a multicultural center in Hyattsville, Maryland providing essential programs and services to the low-income diverse communities in Langley Park	2009	\$2,000,000	C	\$750,000	\$0	\$500,000

C - Capital Project O - General Operating Support P - Program Support

□ - Grants in the U.S. ■ - Grants in Israel, the Former Soviet Union (FSU), and other countries outside the U.S.

ORGANIZATION NAME	FISCAL YEAR APPROVED	GRANT AMOUNT	TYPE OF GRANT	PAYMENT AMT FOR FYE 10	PAYMENT AMT FOR FYE 11	PAYMENT AMT FOR FYE 12
<b>Center for Urban Families</b> BALTIMORE, MARYLAND to provide support to an organization which provides an integrated service model for some of the hardest to serve residents in Baltimore	2012	\$250,000	O	\$0	\$0	\$250,000
to support funding for a new organizational headquarters and workforce development center	2009	\$1,500,000	C	\$1,000,000	\$0	\$0
to provide support to an organization which provides an integrated service model for some of the hardest to serve residents in Baltimore	2008	\$1,800,000	O	\$600,000	\$0	\$0
<b>Civic Works, Inc.</b> BALTIMORE, MARYLAND to provide support to renovate and restore the historic Clifton Mansion which is the headquarters of Civic Works	2012	\$525,000	C	\$0	\$0	\$0
<b>The Doe Fund, Inc.</b> NEW YORK, NEW YORK to assist homeless individuals, many of whom have a long history of drug abuse and/or incarceration, by transforming their lives through work and training opportunities	2009	\$225,000	O	\$75,000	\$50,000	\$0
<b>Economic Empowerment for Women</b> HAIFA, ISRAEL to support a program that equips low-income women with the knowledge and tools to create small businesses as a means to permanently move out of poverty	2009	\$240,000	O	\$75,000	\$50,000	\$0
<b>The Enterprise Center Community Development Corporation</b> PHILADELPHIA, PENNSYLVANIA to renovate a vacant structure, adding an extension for the Center for Culinary Enterprises, which will leverage food industry-focused programs in job readiness and adult entrepreneurship	2012	\$250,000	C	\$0	\$0	\$250,000
<b>Episcopal Community Services of Maryland</b> BALTIMORE, MARYLAND to support The Jericho Program which seeks to provide training and job placement for 200 men per year over a two-year period	2008	\$100,000	O	\$50,000	\$0	\$0
<b>FareStart</b> NATIONWIDE to support the expansion of Catalyst Kitchens' collaborative network of food service social enterprises across the nation, in addition to providing technical assistance for local food-service efforts in Baltimore	2012	\$75,000	P	\$0	\$0	\$75,000
<b>Fedcap Rehabilitation Services, Inc.</b> NEW YORK, NEW YORK to support Fedcap's Career Directions for Young Adults Employment Program which provides individuals with disabilities and other barriers to employment with job training and employment services	2009	\$200,000	O	\$100,000	\$100,000	\$0
<b>Federation Employment &amp; Guidance Service, Inc.</b> NEW YORK, NEW YORK to provide operating support for specialized workforce development and employment initiatives for unemployed and underemployed individuals	2010	\$200,000	O	\$200,000	\$0	\$0
<b>Getting Out and Staying Out, Inc.</b> NEW YORK, NEW YORK to support services over a three-year period to approximately 1,000 young men between the ages of 18 and 24 in a program that addresses the lack of re-entry and transitional services	2009	\$200,000	O	\$60,000	\$52,500	\$0

C - Capital Project O - General Operating Support P - Program Support  
 - Grants in the U.S.  - Grants in Israel, the Former Soviet Union (FSU), and other countries outside the U.S.



ORGANIZATION NAME	FISCAL YEAR APPROVED	GRANT AMOUNT	TYPE OF GRANT	PAYMENT AMT FOR FYE 10	PAYMENT AMT FOR FYE 11	PAYMENT AMT FOR FYE 12
<b>Goodwill Industries of the Chesapeake, Inc.</b> BALTIMORE, MARYLAND to provide operating support for workforce development services for low-income residents who face severe and persistent barriers to employment	2009	\$750,000	O	\$0	\$250,000	\$250,000
<b>Grameen America</b> NEW YORK, NEW YORK to support the expansion of a micro-loan program for low-income individuals and entrepreneurial activities through credit establishments, savings, and other financial services	2011	\$250,000	P	\$0	\$150,000	\$100,000
<b>Greater Homewood Community Corporation</b> BALTIMORE, MARYLAND to support Greater Homewood's Adult Literacy and English for Speakers of Other Languages (ESOL) programs	2011	\$50,000	P	\$0	\$50,000	\$0
<b>The Hope Program</b> BROOKLYN, NEW YORK to support efforts to help low-income New Yorkers become economically self sufficient by providing them with work-readiness training, internship opportunities, job placement and retention services, and on-site mental health services	2012	\$50,000	O	\$0	\$0	\$50,000
	2008	\$600,000	O	\$200,000	\$0	\$0
<b>Humanim, Inc.</b> BALTIMORE, MARYLAND to support the historic renovation of the East Baltimore American Brewery building that houses employment training and job placement services for individuals with barriers to employment	2008	\$2,750,000	C	\$750,000	\$0	\$0
<b>The ImagineNations Institute, Inc.</b> INTERNATIONAL to support start-up expenses of ImagineNations' new program in Israel and other countries to create micro-enterprise and jobs among poor young adults	2006	\$1,500,000	O	\$250,000	\$250,000	\$0
<b>Institute for Justice (IJ)</b> CHICAGO, ILLINOIS to support the Chicago-based IJ Clinic, which assists in the direct representation of low-income clients who need help in starting and maintaining small businesses that will comply with legal codes and regulations	2012	\$100,000	O	\$0	\$0	\$50,000
	2008	\$150,000	O	\$50,000	\$0	\$0
<b>Jewish Vocational Service and Community Workshop</b> DETROIT, MICHIGAN to support the older worker program in meeting rising demand from unemployed individuals seeking vocational services	2009	\$125,000	O	\$125,000	\$0	\$0
<b>Jewish Vocational Service, Inc.</b> BOSTON, MASSACHUSETTS to provide program support that addresses the challenges of the working poor through the Partnerships for Careers and Learning Program	2010	\$100,000	O	\$50,000	\$50,000	\$0
<b>Jewish Vocational Service of San Francisco</b> SAN FRANCISCO, CALIFORNIA to support the Nursing Workforce Initiative that trains and supports foreign-trained and domestic re-entry nursing students to achieve state licensure and gain employment	2009	\$195,000	O	\$150,000	\$0	\$0

C - Capital Project O - General Operating Support P - Program Support

□ - Grants in the U.S. ■ - Grants in Israel, the Former Soviet Union (FSU), and other countries outside the U.S.

ORGANIZATION NAME	FISCAL YEAR APPROVED	GRANT AMOUNT	TYPE OF GRANT	PAYMENT AMT FOR FYE 10	PAYMENT AMT FOR FYE 11	PAYMENT AMT FOR FYE 12
<b>Job Opportunities Task Force, Inc. (JOTF)</b> BALTIMORE, MARYLAND to support the Baltimore CASH (Creating Assets, Savings and Hope) Campaign which offers free tax preparation services to ensure that eligible low-income and working poor residents take advantage of Earned Income Tax Credit (EITC) and other financial literacy opportunities	2009	\$270,000	O	\$90,000	\$90,000	\$0
to renew general operating support for JOTF which seeks to improve skills, job opportunities, and income of low-skill, low-income workers and job seekers	2008	\$375,000	O	\$125,000	\$125,000	\$0
<b>Jobs for the Future</b> NATIONWIDE to support the National Fund for Workforce Solutions which is advancing careers, addressing employer needs, and changing workforce policies	2008	\$5,000,000	O	\$1,000,000	\$1,000,000	\$1,000,000
<b>Jobs for Youth - Chicago, Inc.</b> CHICAGO, ILLINOIS to provide general operating support for job-readiness training, job placement and follow-up services, General Educational Development (GED) instruction, and occupational skills training for low-income urban youth	2010	\$100,000	O	\$100,000	\$0	\$0
<b>Koret Israel Economic Development Funds, Inc.</b> TEL AVIV, ISRAEL to support the efforts of the Koret Israel Economic Development Fund Israel Microenterprise Initiative which helps financially disadvantaged individuals to start and expand new businesses	2007	\$1,600,000	O	\$400,000	\$0	\$0
<b>Manhattan Institute for Policy Research</b> NEWARK, NEW JERSEY to support the Newark Prisoner Re-Entry Initiative, a public/private partnership that provides job training with employment placement to ex-offenders	2011	\$75,000	P	\$0	\$75,000	\$0
<b>Maryland CASH (Creating Assets, Savings, and Hope) Campaign</b> STATEWIDE to support free tax preparation and asset building activities for low-income workers in Maryland targeting Allegany, Carroll, Frederick, Harford, Montgomery, Prince George's, Somerset, Wicomico, and Worcester counties	2012	\$120,000	P	\$0	\$0	\$60,000
<b>Maryland Center for Veterans Education and Training, Inc. (MCVET)</b> BALTIMORE, MARYLAND to provide general operating support to enhance MCVET's ability to provide educational and job training opportunities	2010	\$140,000	P	\$70,000	\$70,000	\$0
<b>Metropolitan Career Center</b> PHILADELPHIA, PENNSYLVANIA to support the agency's workforce development programs, including the STRIVE job-readiness program which serves individuals from the most distressed neighborhoods in Philadelphia	2008	\$500,000	O	\$175,000	\$0	\$0
<b>Neighborhood Trust Financial Partners</b> NEW YORK, NEW YORK to support the capital campaign for a new Getting Ahead Center serving as the model's headquarters	2011	\$300,000	C	\$0	\$0	\$300,000
<b>Northeast Parent and Child Society</b> SCHENECTADY, NEW YORK to support a capital grant for a new Career Development Center for at-risk youth	2010	\$100,000	C	\$100,000	\$0	\$0

C - Capital Project
 O - General Operating Support
 P - Program Support  
 - Grants in the U.S.
  - Grants in Israel, the Former Soviet Union (FSU), and other countries outside the U.S.

ORGANIZATION NAME	FISCAL YEAR APPROVED	GRANT AMOUNT	TYPE OF GRANT	PAYMENT AMT FOR FYE 10	PAYMENT AMT FOR FYE 11	PAYMENT AMT FOR FYE 12
<b>Olim Together</b> HERZLIYA, ISRAEL to support the Employment, Empowerment, and Leadership for Ethiopian-Israeli University Graduates and Students Program which provides vocational skills and assistance in acquiring suitable jobs for graduates and students	2010	\$50,000	P	\$0	\$25,000	\$25,000
<b>Open Society Institute - Baltimore</b> BALTIMORE, MARYLAND to support the efforts of Power Inside to address the critical needs of Baltimore women detained or recently released from detention	2008	\$125,000	O	\$62,500	\$0	\$0
<b>Opportunity House</b> READING, PENNSYLVANIA to support the agency's operating budget which includes workforce development as part of an integrated array of community programs	2008	\$150,000	O	\$50,000	\$0	\$0
<b>Per Scholas, Inc.</b> BRONX, NEW YORK to complete the renovation of a new computer center for training activities and administrative functions	2011	\$400,000	C	\$0	\$400,000	\$0
<b>Prison Entrepreneurship Program</b> HOUSTON, TEXAS to assist inmates and ex-offenders by providing direct service programs including a training program, reintegration program, job development, continuing education, entrepreneurship training, business start-up assistance, and graduate follow-up	2009	\$750,000	O	\$250,000	\$250,000	\$0
<b>Project Enterprise</b> NEW YORK, NEW YORK to support a peer lending program serving low-income adults in 12 centers in the city	2007	\$300,000	O	\$100,000	\$0	\$0
<b>Resources for Human Development, Inc.</b> PHILADELPHIA, PENNSYLVANIA to support a pilot program that uses an intensive assessment process to match homeless individuals with jobs that pay enough to afford housing and move toward self-sufficiency	2009	\$175,000	O	\$50,000	\$25,000	\$0
<b>Roca, Inc.</b> CHELSEA, MASSACHUSETTS to support the cost of renovations for Roca's transitional employment training program	2009	\$125,000	O	\$50,000	\$0	\$0
<b>Safe and Sound: Baltimore's Campaign for Children and Youth, Inc.</b> BALTIMORE, MARYLAND to support the Public Safety Compact to facilitate ex-prisoner re-entry and reduce incarceration costs	2009	\$750,000	O	\$250,000	\$375,000	\$0
<b>San Diego Second Chance Program</b> SAN DIEGO, CALIFORNIA to support modernization and expansion of a facility to double the available classroom space, increase the computer/learning lab space, and increase the number of counseling offices and meeting rooms	2009	\$250,000	C	\$125,000	\$125,000	\$0
to support the STRIVE job-readiness program for inner city, low-income adults	2008	\$600,000	O	\$200,000	\$0	\$0
<b>Seedco</b> NEW YORK, NEW YORK to assist in the launch of EarnBenefits Baltimore, a direct services network of community-based organizations that provide eligibility screening and application assistance for a range of public and private work supports	2007	\$300,000	O	\$100,000	\$0	\$0

C - Capital Project O - General Operating Support P - Program Support

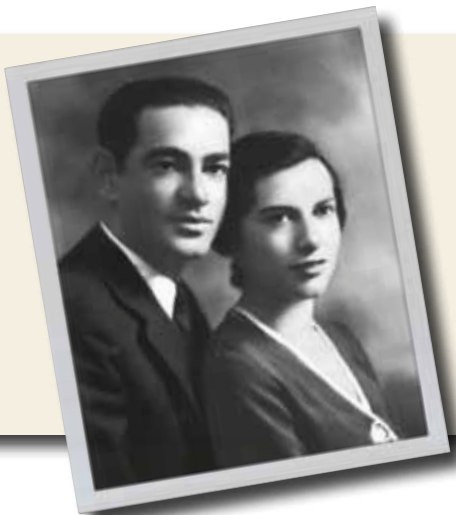
□ - Grants in the U.S. ■ - Grants in Israel, the Former Soviet Union (FSU), and other countries outside the U.S.



ORGANIZATION NAME	FISCAL YEAR APPROVED	GRANT AMOUNT	TYPE OF GRANT	PAYMENT AMT FOR FYE 10	PAYMENT AMT FOR FYE 11	PAYMENT AMT FOR FYE 12
<b>Sheppard and Enoch Pratt Foundation, Inc.</b> STATEWIDE to support the implementation of a large workforce development initiative to enhance the quality and effectiveness of supported employment services for mentally ill persons	2009	\$1,740,000	P	\$580,000	\$435,000	\$0
<b>Streetlights Production Assistant Program, Inc.</b> LOS ANGELES, CALIFORNIA to support job placement and career advancement opportunities for disadvantaged and ethnically diverse individuals in the television, film, and related industries	2009	\$150,000	O	\$50,000	\$50,000	\$0
<b>STRIVE International</b> NEW YORK, NEW YORK to provide general operating support for training, placement, and ongoing services for low-income men and women	2012	\$50,000	O	\$0	\$0	\$50,000
to support the start-up of a STRIVE program in Camden, New Jersey	2008	\$250,000	O	\$75,000	\$0	\$0
<b>Tebeka</b> NETANYA, ISRAEL to provide program support for a leadership program for Ethiopian-Israeli law students, interns, and lawyers to access key positions in the private, academic, and public sectors	2010	\$50,000	P	\$0	\$25,000	\$25,000
<b>Tech Career</b> NAHSHON, ISRAEL to support an organization that is providing Ethiopian-Israelis with hard-skills training in a residential setting and then placing them in professional positions in the high-tech industry	2011	\$50,000	O	\$0	\$50,000	\$0
	2008	\$150,000	O	\$50,000	\$0	\$0
<b>Twin Cities RISE!</b> MINNEAPOLIS, MINNESOTA to provide training for adults living in poverty through a combination of personal empowerment, coaching, work-skills training, support services, and job placement in the Twin Cities	2010	\$200,000	O	\$0	\$200,000	\$0
<b>The United Way of Central Maryland, Inc.</b> BALTIMORE, MARYLAND to assist in providing education, career-track training, and job placement services to youth who have dropped out of high school and are unemployed	2008	\$1,500,000	O	\$750,000	\$0	\$0
<b>Upwardly Global</b> NEW YORK, NEW YORK to provide general operating support for underemployed and unemployed immigrant New Yorkers with American job search skills, acculturation coaching, one-on-one mentoring, and job placement assistance	2012	\$200,000	O	\$0	\$0	\$100,000
	2010	\$150,000	O	\$100,000	\$50,000	\$0
<b>Urban Alliance Foundation, Inc.</b> BALTIMORE, MARYLAND & WASHINGTON, DC to support Urban Alliance's High School Internship Program, a youth employment program for low-income students	2010	\$100,000	P	\$50,000	\$50,000	\$0
	2009	\$270,000	O	\$90,000	\$70,000	\$0

C - Capital Project  
O - General Operating Support  
P - Program Support  
 - Grants in the U.S.  
 - Grants in Israel, the Former Soviet Union (FSU), and other countries outside the U.S.

ORGANIZATION NAME	FISCAL YEAR APPROVED	GRANT AMOUNT	TYPE OF GRANT	PAYMENT AMT FOR FYE 10	PAYMENT AMT FOR FYE 11	PAYMENT AMT FOR FYE 12
<b>Wisconsin Regional Training Partnership</b> MILWAUKEE, WISCONSIN to support a full range of employment and training services designed to move under-represented individuals into family-sustaining jobs	2009	\$100,000	○	\$50,000	\$0	\$0
<b>Year Up, Inc.</b> NEW YORK, NEW YORK; WASHINGTON, DC; PROVIDENCE, RHODE ISLAND to support a training program that provides urban young adults with a combination of technical and professional skills, college credit, and hands-on experience through corporate apprenticeship	2009	\$230,000	○	\$115,000	\$115,000	\$0
	2007	\$900,000	○	\$0	\$300,000	\$0



*“While others are finding the cures for all the ills of the world, someone will be hungry, someone will be cold. That’s our job.”*

*– Harry Weinberg*

○ - Capital Project   ○ - General Operating Support   ● - Program Support

□ - Grants in the U.S.   ■ - Grants in Israel, the Former Soviet Union (FSU), and other countries outside the U.S.





**The Harry and Jeanette Weinberg Foundation, Inc.**

7 Park Center Court, Owings Mills, Maryland 21117

Phone: 410-654-8500 Fax: 410-654-4900

[www.hjweinbergfoundation.org](http://www.hjweinbergfoundation.org)