



The Harry and Jeanette Weinberg Foundation

Foundation Overview

The Harry and Jeanette Weinberg Foundation is dedicated to meeting the basic needs of people experiencing poverty.

The Foundation provides about \$150 million annually in grants and other activities to support direct services in the areas of **Housing, Health, Jobs, Education, and Aging**. These focus areas, as well as the funding priorities that guide the Foundation's grantmaking, are detailed on pages 5 through 16. Grants serve a range of individuals, including women at risk and their children, older adults, people with disabilities, and the Jewish community.

To learn more about the Foundation, please visit www.hjweinberg.org.



Our History

Like most immigrants coming to the United States in the early 1900s, Harry Weinberg's family arrived with little more than hope and a willingness to work hard. Beyond their many challenges, Harry and his wife, Jeanette, saw opportunity.

Harry was gifted with a keen business mind and entrepreneurial spirit. Despite leaving school at age 12, he built a career that turned one successful investment into another, often seeing value where others did not. In the 1950s and 1960s, he owned bus lines in several cities, including Honolulu, Hawai'i. Again seeing opportunity, and before many others recognized the eventual value of real estate in Hawai'i, Harry began purchasing properties throughout the Hawaiian Islands. At the time of his death, he was the largest single real estate investor in Hawai'i.

However, Harry never forgot his humble roots. In 1959, he created The Harry and Jeanette Weinberg Foundation to help meet the needs of low-income people. The Foundation as we know it today has existed since 1990, when Harry Weinberg died, one year after his wife passed away. Today, the fortune that Harry amassed has grown to \$3.1 billion — the assets that make possible the Weinberg Foundation's grantmaking.

Our Leadership



Paula B. Pretlow
Chair and Trustee



Robert T. Kelly Jr.
Trustee



Gordon Berlin
Trustee



Nimrod Goor
Trustee



Margery Bronster
Trustee



Rachel Garbow Monroe
President and CEO

Our Commitment to the Jewish Community

The Weinberg Foundation supports organizations that serve people experiencing poverty within the Jewish community in the United States and Israel. Grants to support the Jewish community align with the Foundation's funding priorities.

In Israel, the Foundation has a long history of supporting direct service providers, including the American Jewish Joint Distribution Committee's work dedicated to serving older adults (Eshel) and providing job training for low-income people (TEVET). In 2018, the Foundation expanded its commitment in Israel to organizations serving women at risk and their children.

In North America, over nearly three decades, the Weinberg Foundation has provided about \$30 million to organizations serving Holocaust survivors, and in Baltimore, the Foundation is the largest contributor to The Associated: Jewish Federation of Baltimore, providing one of the single biggest annual campaign gifts to any Jewish Federation.

The Foundation is also engaged in a range of strategic initiatives to address Jewish poverty on a national scale (see page 4). In addition, the Foundation supports various initiatives that strengthen the Jewish nonprofit sector, including efforts to develop the next generation of leaders and promote diversity, equity, and inclusion within the Jewish community.



Key Jewish Community Initiatives



Together Ending Need

In partnership with the Jewish Funders Network, the Foundation supports a nationwide collaborative effort dedicated to addressing poverty within the U.S. Jewish community. Launched in 2019, Together Ending Need's goals include assembling reliable and uniform data on Jewish poverty in America; changing the narrative on Jewish poverty; and developing, aggregating, and sharing best practices and models for reducing poverty.

LEADING EDGE

Leading Edge

This nonprofit helps Jewish organizations attract, develop, and retain top talent by offering programs for onboarding new CEOs, strengthening partnerships between lay leaders and professionals, and conducting original research.



Yashar: Support for Inclusion at Jewish Camp

This initiative in partnership with the Foundation for Jewish Camp aims to enhance accessibility and inclusion for campers and staff with disabilities through capital improvements, professional development, staff training, research, and evaluation at participating camps and the broader field.



SafetyRespectEquity

The SafetyRespectEquity Network works to foster safe, respectful, and equitable Jewish workplaces and communal spaces. Through gatherings, research, and development of national standards, the network advances women's leadership and gender equity, in addition to addressing sexual harassment, sexism, and gender discrimination.

Our Focus Areas

The Weinberg Foundation provides grants across five focus areas:



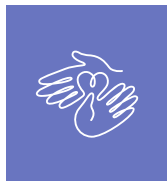
Housing



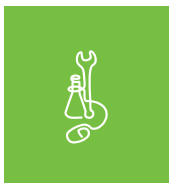
Education



Health



Aging



Jobs

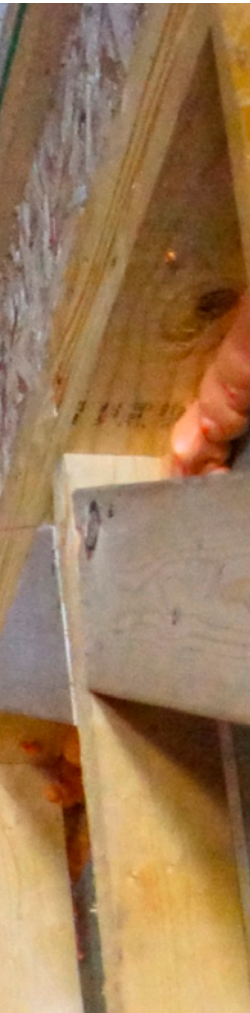




Housing

Stable housing provides a foundation for individuals, children, and families to lead healthy and productive lives. Without housing, people are unable to focus on education, employment, health care, and other basic needs.





Funding Priorities

1. Supporting the creation of **housing or renovations** of existing units to provide and maintain affordable and quality options that offer services to help people remain stably housed.
2. Helping people **secure or sustain permanent housing** within their communities by providing comprehensive services that meet a range of social, economic, and health needs.

Key Initiative

Deeply Affordable Housing



The Foundation has committed \$8 million for programs in Maryland and Illinois to provide affordable housing for people with disabilities. In partnership with state agencies, these programs create apartments that enable eligible individuals to live independently and within their communities.



Health

Good health is essential to help people move and remain out of poverty. Poor physical or mental health can prevent or complicate the pursuit of education, employment, and other opportunities for economic mobility.





Funding Priorities

1. Supporting organizations that provide **access to health care** and strive to improve patient health.
2. Enhancing the **mental wellness of veterans** who are returning to civilian life.
3. Increasing access to **nutritious food**.
4. Promoting **family safety** and **reducing the long-term traumatic effects** of abuse and neglect, sexual assault, intimate partner or family violence, elder abuse, and exposure to community violence.

Key Initiative

Community Health Centers

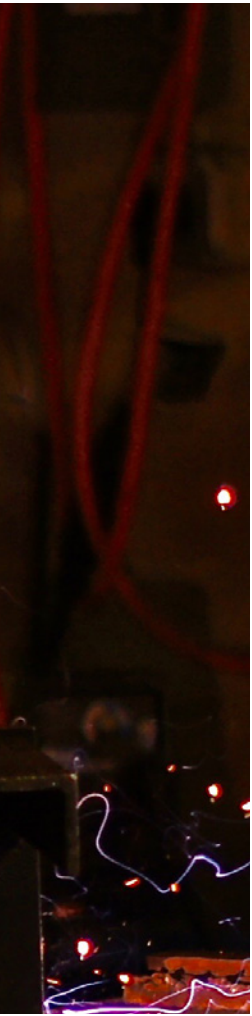
This initiative aims to make dental and behavioral health care more accessible through federally qualified health centers located across the Foundation's priority communities, particularly in Hawai'i and rural areas with severely limited access. Supporting the renovation, expansion, and operational support of these facilities allows them to serve more patients.



Jobs

Employment provides the best opportunity for personal success and financial security. Quality training programs that lead to employment enable individuals and families to achieve economic stability.





Funding Priorities

1. Supporting **job-training programs** that result in industry-recognized credentials, as well as job-placement and retention services.
2. Providing opportunities for **career exploration in high school** and hands-on learning opportunities for **youth ages 14-24**.

Key Initiatives

National Fund for Workforce Solutions

The National Fund for Workforce Solutions consists of more than 30 regional collaborative efforts that help workers succeed and provide employers with the talent they need. The Foundation supports two new collaboratives in Hawai'i and Northeastern Pennsylvania, coaching for the leaders of the collaboratives, and capacity building throughout the network.

Wage Record Study for Maryland Grantees

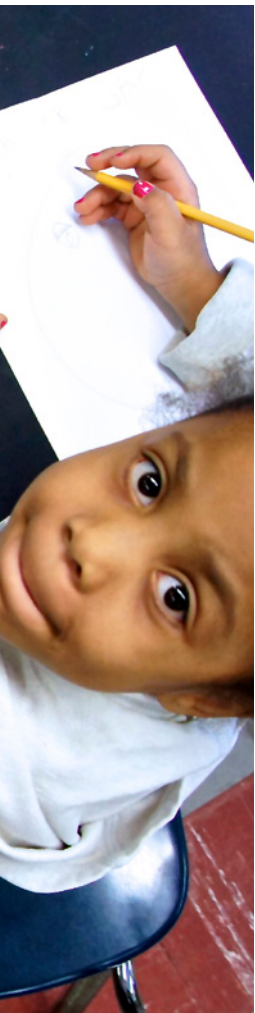
This study — supported in partnership with the Abell and Annie E. Casey foundations — analyzes pre- and post-training earnings for participants of Maryland's employment and training programs to better understand their long-term impact.



Education

Education can help break the cycle of poverty. Providing children and youth with academic opportunities helps prepare them for a stable and productive future. The Foundation is dedicated to supporting organizations that provide or supplement a high-quality education from kindergarten through high school.





Funding Priorities

1. Supporting **STEM programs**, as well as programs proven to boost math proficiency, to help prepare youth for jobs in those fields.
2. Funding **academic programs** for K-12 students that take place **after school, on weekends,** and **during the summer.**
3. Helping students develop a **postsecondary plan** and position them for **success after graduation** from high school.

Key Initiatives

Baltimore Elementary and Middle School Library Project



This \$30 million multiyear partnership builds and transforms Baltimore City's public school libraries in neighborhoods where many students face academic and economic challenges. The Library Project serves over 7,700 students and their families through 17 libraries.

Baltimore Summer Funding Collaborative



This annual partnership supports high-quality summer programs for children and youth. It has grown to include nearly a dozen national and local funders.



Aging

All individuals deserve to age with respect and dignity, with the support they need to thrive. Older adults often face unique social, physical, and economic challenges that can undermine their health and quality of life, as well as their ability to remain in their homes and connected with their community.





Funding Priorities

1. Enabling older adults to **live in their home safely** and comfortably and **maintain their independence**.
2. Connecting older adults with a range of services that help them **stay active and engaged in their community**, with maximum **quality of life**.

Key Initiatives

Community Aging in Place, Advancing Better Living for Elders (CAPABLE)



CAPABLE

The Foundation has supported the expansion of this five-month program in nearly a dozen states. CAPABLE combines home repair services with a registered nurse and occupational therapy for older adults struggling with everyday activities. Research shows CAPABLE has provided more than six times the return on investment, with roughly \$3,000 in program costs per participant yielding more than \$30,000 in saved medical costs.

Housing for LGBTQ Older Adults



Since 2017, the Foundation has invested in 10 affordable housing projects that provide supportive environments with services tailored to LGBTQ older adults. A partnership with SAGE has led to almost 1,000 new units of such housing, which also provides key services, including access to health care, as well as a true sense of community and belonging.

Our Approach to Grantmaking

The Weinberg Foundation provides capital, program, and operating grants and distributes most of its funding in places that represent personal ties to the life and legacy of Harry Weinberg; communities where Weinberg Foundation trustees reside and provide leadership; and rural areas within or near these locations.

- Baltimore
- New York City
- Hawai'i
- Northeastern Pennsylvania
- Israel
- San Francisco

For more on our work in these areas, visit www.hjweinberg.org/where-we-give.

Our Offices



Baltimore, Maryland

410.654.8500



Honolulu, Hawai'i

808.924.1000

It is not upon you to finish the work,
but neither are you free to desist from it.

לא עליך המלאכה לגמור, ולא אתה בן חורין להבטל ממנה.

Pirkei Avot 2:16



The Harry and Jeanette Weinberg Foundation | www.hjweinberg.org